



**ELECTRONIC COPY**

## LABORATORY GROWN DIAMOND REPORT

September 20, 2025	
IGI Report Number	LG735566737
Description	LABORATORY GROWN DIAMOND
Shape and Cutting Style	PRINCESS CUT
Measurements	6.74 X 6.67 X 4.90 MM

## GRADING RESULTS

Carat Weight	2.03 CARATS
Color Grade	D
Clarity Grade	INTERNALLY FLAWLESS

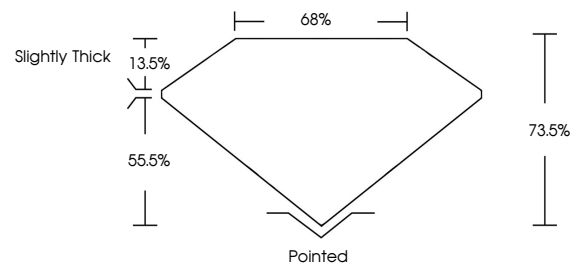
### ADDITIONAL GRADING INFORMATION

Polish	EXCELLENT
Symmetry	EXCELLENT
Fluorescence	NONE
Inscription(s)	 LG735566737

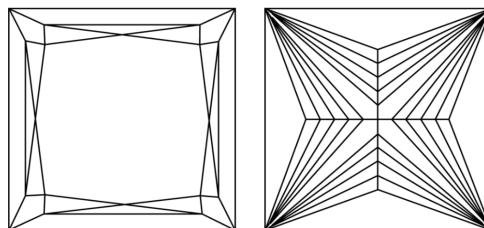
Comments: As Grown - No indication of post-growth treatment.  
This Laboratory Grown Diamond was created by High Pressure High Temperature (HPHT) growth process.  
Type II

LG735566737  
Report verification at [igi.org](https://igi.org)

## PROPORTIONS

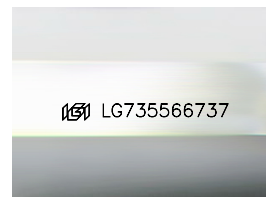


## CLARITY CHARACTERISTICS



### KEY TO SYMBOLS

Red symbols indicate internal characteristics.  
Green symbols indicate external characteristics.



Sample Image Used

## COLOR

D E F G H I J Faint Very Light Light

## CLARITY

IF	VVS <sup>1-2</sup>	VS <sup>1-2</sup>	SI <sup>1-2</sup>	I <sup>1-3</sup>
Internally Flawless	Very Very Slightly Included	Very Slightly Included	Slightly Included	Included

## LABORATORY GROWN DIAMOND REPORT



September 20, 2025	
IGI Report Number	LG735566737
Description	LABORATORY GROWN DIAMOND
Shape and Cutting Style	PRINCESS CUT
Measurements	6.74 X 6.67 X 4.90 MM
GRADING RESULTS	
Carat Weight	2.03 CARATS
Color Grade	D
Clarity Grade	INTERNALLY FLAWLESS

### ADDITIONAL GRADING INFORMATION

Polish	EXCELLENT
Symmetry	EXCELLENT
Fluorescence	NONE
Inscription(s)	<del>LG</del> LG735566737
Comments: As Grown - No indication of post-growth treatment.	
This Laboratory Grown Diamond was created by High Pressure High Temperature (HPHT) growth process.	
Type II	



September 20, 2025  
IGI Report No LG735566737  
PRINCESS CUT

6.74 X 6.67 X 4.90 MM	Carat Weight	2.08 CARATS
	Color Grade	D
	Clarity Grade	IF
	Depth	73.6%
	Table	66%
	Girdle	Slightly Thick
	Culet	Pointed
	Polish	EXCELLENT
	Symmetry	EXCELLENT
	Fluorescence	NONE
	Report Number	456112785624292

**Comments:**  
As Grown - No Indication of post-growth treatment.