



INTERNATIONAL GEMOLOGICAL INSTITUTE

ELECTRONIC COPY

LABORATORY GROWN DIAMOND REPORT

November 17, 2025

IGI Report Number

LG735566239

Description

LABORATORY GROWN DIAMOND

Shape and Cutting Style

BRIOLLETTE

Measurements

3.99 X 4.21 X 6.11 MM

GRADING RESULTS

Carat Weight

0.94 CARAT

Color Grade

FANCY PINK

Clarity Grade

VVS 2

ADDITIONAL GRADING INFORMATION

Polish

EXCELLENT

Symmetry

VERY GOOD

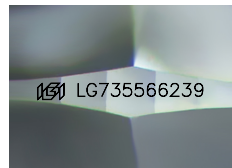
Fluorescence

STRONG

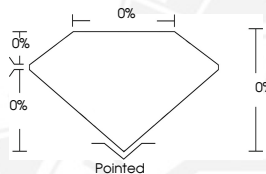
Inscription(s)

IGI LG735566239

Comments: This Laboratory Grown Diamond was created by Chemical Vapor Deposition (CVD) growth process. Indications of post-growth treatment.



Sample Image Used



November 17, 2025

IGI Report Number LG735566239

BRIOLLETTE

LABORATORY GROWN DIAMOND

3.99 X 4.21 X 6.11 MM

Carat Weight 0.94 CARAT

Color Grade FANCY PINK

Clarity Grade VVS 2

Polish EXCELLENT

Symmetry VERY GOOD

Fluorescence STRONG

Inscription(s) IGI LG735566239

Comments: This Laboratory Grown Diamond was created by Chemical Vapor Deposition (CVD) growth process. Indications of post-growth treatment.



November 17, 2025

IGI Report Number LG735566239

BRIOLLETTE

LABORATORY GROWN DIAMOND

3.99 X 4.21 X 6.11 MM

Carat Weight 0.94 CARAT

Color Grade FANCY PINK

Clarity Grade VVS 2

Polish EXCELLENT

Symmetry VERY GOOD

Fluorescence STRONG

Inscription(s) IGI LG735566239

Comments: This Laboratory Grown Diamond was created by Chemical Vapor Deposition (CVD) growth process. Indications of post-growth treatment.



THIS DOCUMENT WAS PRODUCED WITH THE FOLLOWING SECURITY MEASURES: SPECIAL DOCUMENT PAPER, INK SCREENS, WATERMARK, BACKGROUND DESIGNS, HOLOGRAM AND OTHER SECURITY FEATURES NOT LISTED AND DO EXCEED DOCUMENT SECURITY INDUSTRY GUIDELINES.

For terms & conditions and to verify this report, please visit www.igi.org