



**ELECTRONIC COPY**

LG735563256  
Report verification at igi.org



September 20, 2025

IGI Report Number **LG735563256**

Description **LABORATORY GROWN DIAMOND**

Shape and Cutting Style **ROUND BRILLIANT**

Measurements **9.87 - 9.93 X 5.92 MM**

**GRADING RESULTS**

Carat Weight **3.52 CARATS**

Color Grade **E**

Clarity Grade **VVS 2**

Cut Grade **IDEAL**

September 20, 2025

IGI Report Number **LG735563256**

Description **LABORATORY GROWN DIAMOND**

Shape and Cutting Style **ROUND BRILLIANT**

Measurements **9.87 - 9.93 X 5.92 MM**

**GRADING RESULTS**

Carat Weight **3.52 CARATS**

Color Grade **E**

Clarity Grade **VVS 2**

Cut Grade **IDEAL**

**ADDITIONAL GRADING INFORMATION**

Polish **EXCELLENT**

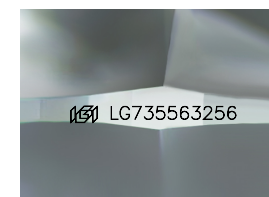
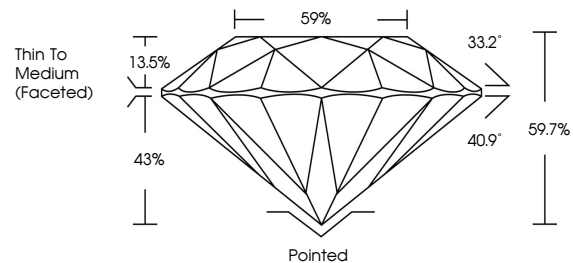
Symmetry **EXCELLENT**

Fluorescence **NONE**

Inscription(s) **IGI LG735563256**

Comments: This Laboratory Grown Diamond was created by Chemical Vapor Deposition (CVD) growth process. Type IIa

**PROPORTIONS**



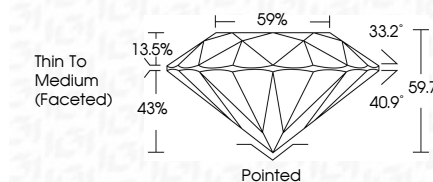
Sample Image Used

**COLOR**

D E F G H I J Faint Very Light Light

**CLARITY**

IF	VS <sup>1-2</sup>	VS <sup>1-2</sup>	SI <sup>1-2</sup>	I <sup>1-3</sup>
Internally Flawless	Very Very Slightly Included	Very Slightly Included	Slightly Included	Included



**ADDITIONAL GRADING INFORMATION**

Polish **EXCELLENT**

Symmetry **EXCELLENT**

Fluorescence **NONE**

Inscription(s) **IGI LG735563256**

Comments: This Laboratory Grown Diamond was created by Chemical Vapor Deposition (CVD) growth process. Type IIa



**IGI**



September 20, 2025	IGI Report No LG735563256	3.52 CARATS	E	VVS 2	IDEAL	59.7%	43%	33.2°	40.9°	Pointed	EXCELLENT	EXCELLENT	NONE	IGI LG735563256
ROUND BRILLIANT	9.87 - 9.93 X 5.92 MM	Carat Weight	Color Grade	Clarity Grade	Cut Grade	Depth	Girdle	Table	Crown Angle	Thin To Medium (Faceted)	Polish	Symmetry	Fluorescence	Inscription(s)

Comments: This Laboratory Grown Diamond was created by Chemical Vapor Deposition (CVD) growth process. Type IIa