



ELECTRONIC COPY

LG735563180
Report verification at igi.org



September 27, 2025
IGI Report Number **LG735563180**
Description **LABORATORY GROWN DIAMOND**
Shape and Cutting Style **CUT CORNERED
RECTANGULAR MODIFIED
BRILLIANT**
Measurements **10.42 X 7.15 X 4.86 MM**
GRADING RESULTS
Carat Weight **3.03 CARATS**
Color Grade **FANCY INTENSE ORANGY
PINK**
Clarity Grade **VVS 2**

LABORATORY GROWN DIAMOND REPORT

September 27, 2025
IGI Report Number **LG735563180**
Description **LABORATORY GROWN DIAMOND**
Shape and Cutting Style **CUT CORNERED RECTANGULAR
MODIFIED BRILLIANT**
Measurements **10.42 X 7.15 X 4.86 MM**

GRADING RESULTS

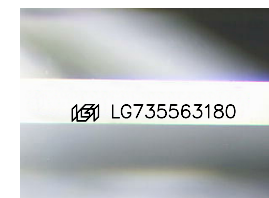
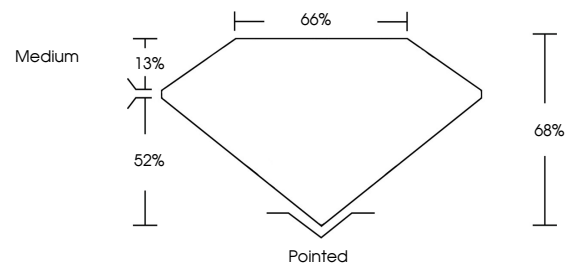
Carat Weight **3.03 CARATS**
Color Grade **FANCY INTENSE ORANGY
PINK**
Clarity Grade **VVS 2**

ADDITIONAL GRADING INFORMATION

Polish **EXCELLENT**
Symmetry **EXCELLENT**
Fluorescence **STRONG**
Inscription(s) **(IGI) LG735563180**

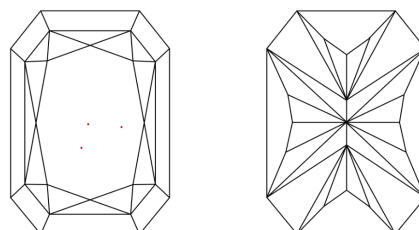
Comments: This Laboratory Grown Diamond was created by Chemical Vapor Deposition (CVD) growth process.
Indications of post-growth treatment.

PROPORTIONS



Sample Image Used

CLARITY CHARACTERISTICS



KEY TO SYMBOLS

Red symbols indicate internal characteristics.
Green symbols indicate external characteristics.

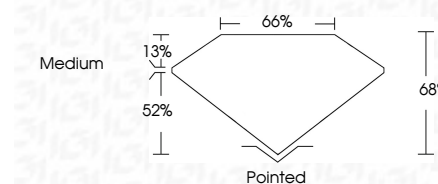
COLOR

D E F G H I J Faint Very Light Light

CLARITY

IF WS¹⁻² VS¹⁻² SI¹⁻² I¹⁻³

Internally Flawless Very Very Slightly Included Very Slightly Included Slightly Included Included



ADDITIONAL GRADING INFORMATION

Polish **EXCELLENT**
Symmetry **EXCELLENT**
Fluorescence **STRONG**
Inscription(s) **(IGI) LG735563180**
Comments: This Laboratory Grown Diamond was created by Chemical Vapor Deposition (CVD) growth process.
Indications of post-growth treatment.



September 27, 2025
IGI Report No LG735563180
CUT CORNERED RECT. MODIFIED BRILLIANT
3.03 CARATS
FANCY INTENSE ORANGY PINK
VVS 2
68%
65%
Medium
Pointed
EXCELLENT
EXCELLENT
STRONG
(IGI) LG735563180

Comments: This Laboratory Grown Diamond was created by Chemical Vapor Deposition (CVD) growth process.
Indications of post-growth treatment.