



ELECTRONIC COPY

LG735563160
Report verification at igi.org



September 27, 2025

IGI Report Number **LG735563160**

Description **LABORATORY GROWN DIAMOND**

Shape and Cutting Style **ROUND BRILLIANT**

Measurements **8.05 - 8.12 X 4.95 MM**

GRADING RESULTS

Carat Weight **2.01 CARATS**

Color Grade **FANCY VIVID PINK**

Clarity Grade **VS 1**

Cut Grade **IDEAL**

September 27, 2025
IGI Report Number **LG735563160**
Description **LABORATORY GROWN DIAMOND**
Shape and Cutting Style **ROUND BRILLIANT**
Measurements **8.05 - 8.12 X 4.95 MM**

GRADING RESULTS

Carat Weight **2.01 CARATS**

Color Grade **FANCY VIVID PINK**

Clarity Grade **VS 1**

Cut Grade **IDEAL**

ADDITIONAL GRADING INFORMATION

Polish **EXCELLENT**

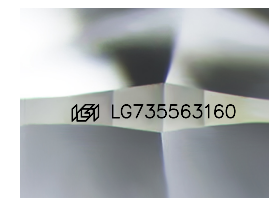
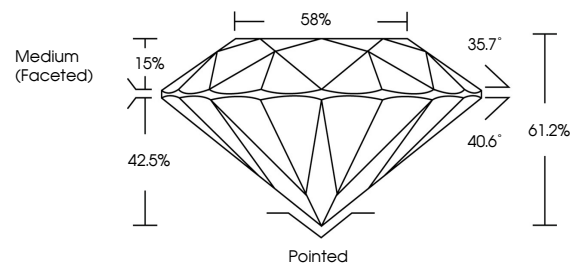
Symmetry **EXCELLENT**

Fluorescence **STRONG**

Inscription(s) **LG735563160**

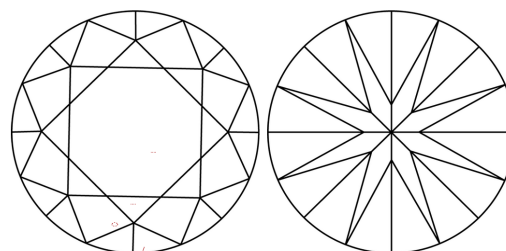
Comments: This Laboratory Grown Diamond was created by Chemical Vapor Deposition (CVD) growth process.
Indications of post-growth treatment.

PROPORTIONS



Sample Image Used

CLARITY CHARACTERISTICS



KEY TO SYMBOLS

Red symbols indicate internal characteristics.
Green symbols indicate external characteristics.

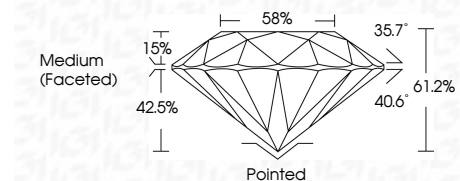
COLOR

D E F G H I J Faint Very Light Light

CLARITY

IF VS¹⁻² VS¹⁻² SI¹⁻² I¹⁻³

Internally Flawless Very Very Slightly Included Very Slightly Included Slightly Included Included



ADDITIONAL GRADING INFORMATION

Polish **EXCELLENT**

Symmetry **EXCELLENT**

Fluorescence **STRONG**

Inscription(s) **LG735563160**

Comments: This Laboratory Grown Diamond was created by Chemical Vapor Deposition (CVD) growth process.
Indications of post-growth treatment.



September 27, 2025
IGI Report No LG735563160
ROUND BRILLIANT

2.01 CARATS
Carat Weight
FANCY VIVID PINK
Color Grade

VS 1
Clarity Grade
IDEAL
Depth
58%
Medium (Faceted)
Girdle

Pointed
Culet
EXCELLENT
Polish
EXCELLENT
Symmetry
STRONG
Fluorescence
IGI LG735563160
Inscription(s)

Comments: This Laboratory Grown Diamond was created by Chemical Vapor Deposition (CVD) growth process.
Indications of post-growth treatment.