



**ELECTRONIC COPY**

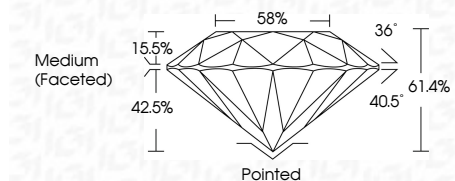
LG735560930  
Report verification at igi.org



September 18, 2025  
IGI Report Number **LG735560930**  
Description **LABORATORY GROWN DIAMOND**  
Shape and Cutting Style **ROUND BRILLIANT**  
Measurements **8.71 - 8.74 X 5.36 MM**

**GRADING RESULTS**

Carat Weight **2.53 CARATS**  
Color Grade **F**  
Clarity Grade **VVS 2**  
Cut Grade **IDEAL**

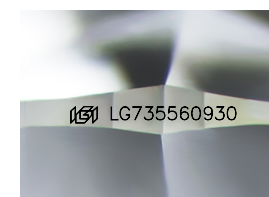


**ADDITIONAL GRADING INFORMATION**

Polish **EXCELLENT**  
Symmetry **EXCELLENT**  
Fluorescence **NONE**  
Inscription(s) **IGI LG735560930**  
Comments: This Laboratory Grown Diamond was created by Chemical Vapor Deposition (CVD) growth process. Type IIa

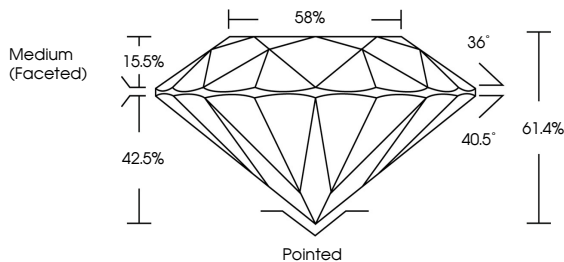


September 18, 2025	IGI Report No LG735560930	2.53 CARATS	F	VVS 2	IDEAL	61.4%	58%	Medium (Faceted)	Pointed	EXCELLENT	EXCELLENT	NONE	IGI LG735560930
IGI Report No	LG735560930	Carat Weight	2.53 CARATS	Color Grade	F	Clarity Grade	VVS 2	Depth	61.4%	Cut Grade	IDEAL	Fluorescence	NONE
Shape and Cutting Style	ROUND BRILLIANT	Measurements	8.71 - 8.74 X 5.36 MM	Table	58%	Height	15.5%	Facet depth	42.5%	Polish	EXCELLENT	Symmetry	EXCELLENT
Carat Weight	2.53 CARATS	Color Grade	F	Clarity Grade	VVS 2	Cut Grade	IDEAL	Fluorescence	NONE	Inscription(s)	IGI LG735560930	Comments: This Laboratory Grown Diamond was created by Chemical Vapor Deposition (CVD) growth process. Type IIa	

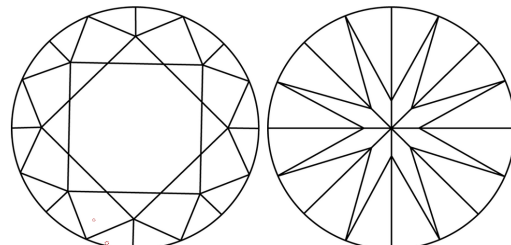


Sample Image Used

**PROPORTIONS**



**CLARITY CHARACTERISTICS**



**KEY TO SYMBOLS**

Red symbols indicate internal characteristics.  
Green symbols indicate external characteristics.

**COLOR**

D	E	F	G	H	I	J	Faint	Very Light	Light
---	---	---	---	---	---	---	-------	------------	-------

**CLARITY**

IF	VS <sup>1-2</sup>	VS <sup>1-2</sup>	SI <sup>1-2</sup>	I <sup>1-3</sup>
Internally Flawless	Very Very Slightly Included	Very Slightly Included	Slightly Included	Included

