

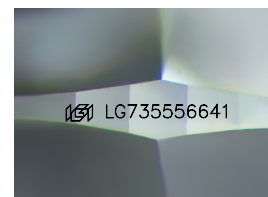
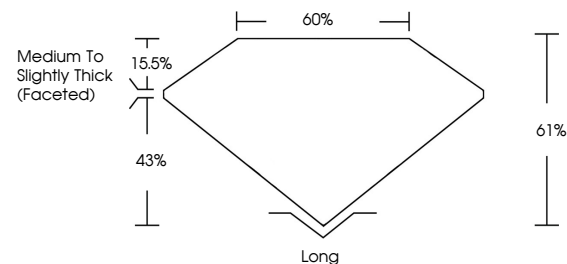


**ELECTRONIC COPY**

## LABORATORY GROWN DIAMOND REPORT

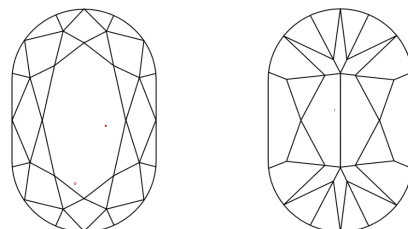
LG735556641  
Report verification at [igi.org](https://igi.org)

## PROPORTIONS



Sample Image Used

## CLARITY CHARACTERISTICS



### KEY TO SYMBOLS

Red symbols indicate internal characteristics.  
Green symbols indicate external characteristics.

## COLOR

D E F G H I J Faint Very Light Light

## CLARITY

IF      VWS<sup>1-2</sup>      VS<sup>1-2</sup>      SI<sup>1-2</sup>      I<sup>1-3</sup>

Internally Flawless	Very Very Slightly Included	Very Slightly Included	Slightly Included	Included
------------------------	--------------------------------	---------------------------	----------------------	----------

## LABORATORY GROWN DIAMOND REPORT



September 23, 2025

IGI Report Number **LG735556641**

Description	LABORATORY GROWN DIAMOND
-------------	--------------------------

Shape and Cutting Style **RECTANGULAR CUSHION**  
**MODIFIED BRILLIANT**

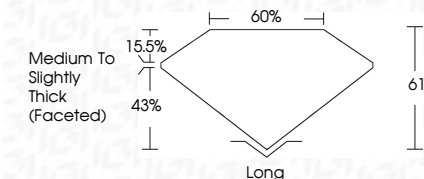
Measurements **9.27 X 5.87 X 3.58 MM**

## GRADING RESULTS

Carat Weight 1.57 CARAT

Color Grade G

Clarity Grade VS 1



### ADDITIONAL GRADING INFORMATION

Polish **EXCELLENT**Symmetry **EXCELLENT**Fluorescence **NONE**Inscription(s)  LG735556641

Comments: This Laboratory Grown Diamond was created by Chemical Vapor Deposition (CVD) growth process.  
Type IIa



© IGI 2020, International Gemological Institute

FD - 10 20

**www.igi.org**

THIS DOCUMENT WAS PRODUCED WITH THE FOLLOWING SECURITY MEASURES: SPECIAL DOCUMENT PAPER, INK SCREENS, WATERMARK, BACKGROUND DESIGNS, HOLOGRAM AND OTHER SECURITY FEATURES NOT LISTED AND DO EXCEED DOCUMENT SECURITY INDUSTRY GUIDELINE

September 23, 2025  
 G1 Report No I673555  
 RECTANGULAR CUSHION  
 BRILLIANT  
 2.27 X 5.87 X 3.58 MM  
 Color Weight  
 Color Grade  
 Clarity Grade  
 Depth  
 Table  
 Girdle  
 Culet  
 Polish  
 Symmetry  
 Fluorescence  
 Inscription(s)

**Comments:**  
This Laboratory Grown Diamond was  
created by Chemical Vapor Deposition  
(CVD) growth process.