



ELECTRONIC COPY

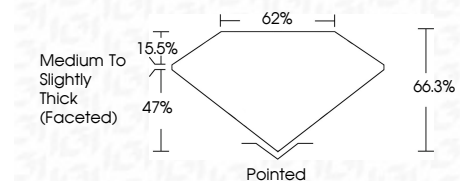
LG73555304
Report verification at igi.org



September 18, 2025
IGI Report Number **LG73555304**
Description **LABORATORY GROWN DIAMOND**
Shape and Cutting Style **OVAL MIXED CUT**
Measurements **14.11 X 6.12 X 4.06 MM**

GRADING RESULTS

Carat Weight **2.65 CARATS**
Color Grade **E**
Clarity Grade **VS 1**



ADDITIONAL GRADING INFORMATION

Polish **EXCELLENT**
Symmetry **EXCELLENT**
Fluorescence **NONE**
Inscription(s) **IGI LG73555304**
Comments: This Laboratory Grown Diamond was created by Chemical Vapor Deposition (CVD) growth process. Type IIa



September 18, 2025
IGI Report No LG73555304
OVAL MIXED CUT
14.11 X 6.12 X 4.06 MM
2.65 CARATS
E
66.3%
47%
15.5%
Medium to Slightly Thick (Faceted)
Pointed
EXCELLENT
EXCELLENT
NONE
IGI LG73555304
Comments: This Laboratory Grown Diamond was created by Chemical Vapor Deposition (CVD) growth process. Type IIa

LABORATORY GROWN DIAMOND REPORT

September 18, 2025
IGI Report Number **LG73555304**
Description **LABORATORY GROWN DIAMOND**
Shape and Cutting Style **OVAL MIXED CUT**
Measurements **14.11 X 6.12 X 4.06 MM**

GRADING RESULTS

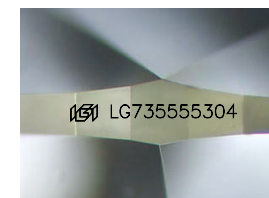
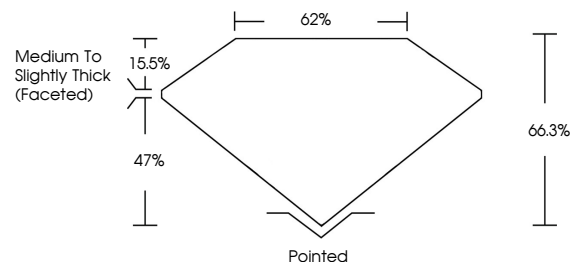
Carat Weight **2.65 CARATS**
Color Grade **E**
Clarity Grade **VS 1**

ADDITIONAL GRADING INFORMATION

Polish **EXCELLENT**
Symmetry **EXCELLENT**
Fluorescence **NONE**
Inscription(s) **IGI LG73555304**

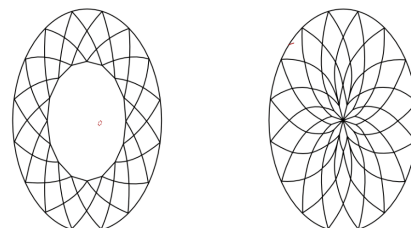
Comments: This Laboratory Grown Diamond was created by Chemical Vapor Deposition (CVD) growth process. Type IIa

PROPORTIONS



Sample Image Used

CLARITY CHARACTERISTICS



KEY TO SYMBOLS

Red symbols indicate internal characteristics.
Green symbols indicate external characteristics.

COLOR

D E F G H I J Faint Very Light Light

CLARITY

IF	WS ¹⁻²	VS ¹⁻²	SI ¹⁻²	I ¹⁻³
Internally Flawless	Very Very Slightly Included	Very Slightly Included	Slightly Included	Included

