



ELECTRONIC COPY

LG735555052
Report verification at igi.org



October 1, 2025
IGI Report Number LG735555052
Description LABORATORY GROWN DIAMOND
Shape and Cutting Style CUT CORNERED RECTANGULAR MODIFIED BRILLIANT
Measurements 7.42 X 4.96 X 3.74 MM
GRADING RESULTS
Carat Weight 1.32 CARAT
Color Grade FANCY YELLOW
Clarity Grade VS 1

LABORATORY GROWN DIAMOND REPORT

October 1, 2025
IGI Report Number LG735555052
Description LABORATORY GROWN DIAMOND
Shape and Cutting Style CUT CORNERED RECTANGULAR MODIFIED BRILLIANT
Measurements 7.42 X 4.96 X 3.74 MM

GRADING RESULTS

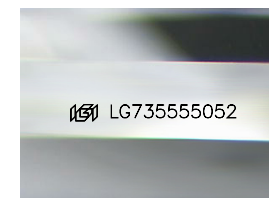
Carat Weight 1.32 CARAT
Color Grade FANCY YELLOW
Clarity Grade VS 1

ADDITIONAL GRADING INFORMATION

Polish EXCELLENT
Symmetry EXCELLENT
Fluorescence NONE
Inscription(s) LG735555052

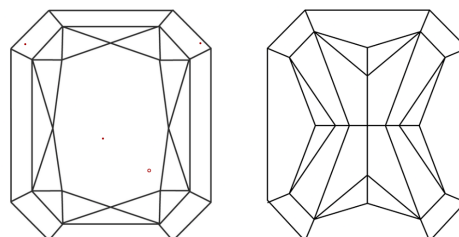
Comments: This Laboratory Grown Diamond was created by Chemical Vapor Deposition (CVD) growth process.

PROPORTIONS



Sample Image Used

CLARITY CHARACTERISTICS



KEY TO SYMBOLS

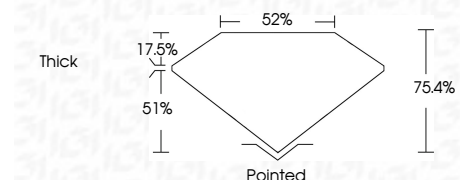
Red symbols indicate internal characteristics.
Green symbols indicate external characteristics.

COLOR

D E F G H I J Faint Very Light Light

CLARITY

IF WS 1-2 VS 1-2 SI 1-2 I 1-3
Internally Flawless Very Very Slightly Included Very Slightly Included Slightly Included Included



ADDITIONAL GRADING INFORMATION

Polish EXCELLENT
Symmetry EXCELLENT
Fluorescence NONE
Inscription(s) LG735555052
Comments: This Laboratory Grown Diamond was created by Chemical Vapor Deposition (CVD) growth process.



October 1, 2025
IGI Report No LG735555052
CUT CORNERED RECT. MODIFIED BRILLIANT
7.42 X 4.96 X 3.74 MM
1.32 CARAT
FANCY YELLOW
VS 1
75.4%
52%
Thick
Pointed
EXCELLENT
EXCELLENT
NONE
Inscription(s) LG735555052
Comments: This Laboratory Grown Diamond was created by Chemical Vapor Deposition (CVD) growth process.