

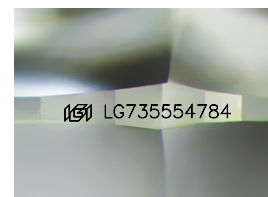
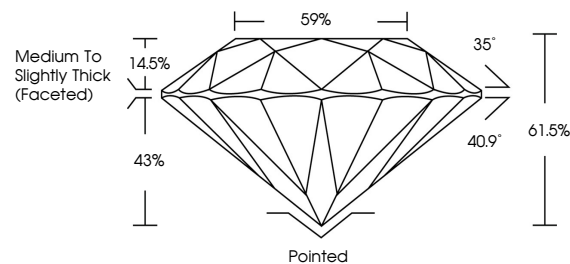


ELECTRONIC COPY

LABORATORY GROWN DIAMOND REPORT

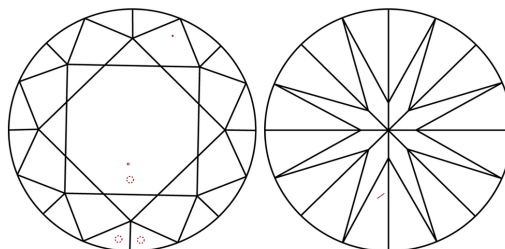
LG735554784
Report verification at igi.org

PROPORTIONS



Sample Image Used

CLARITY CHARACTERISTICS



KEY TO SYMBOLS

Red symbols indicate internal characteristics.
Green symbols indicate external characteristics.

COLOR

D E F G H I J Faint Very Light Light

CLARITY

IF WS¹⁻² VS¹⁻² SI¹⁻² |¹⁻³

Internally Flawless	Very Very Slightly Included	Very Slightly Included	Slightly Included	Included
------------------------	--------------------------------	---------------------------	----------------------	----------

LABORATORY GROWN DIAMOND REPORT



September 19, 2025

IGI Report Number **LG735554784**Description **LABORATORY GROWN DIAMOND**Shape and Cutting Style **ROUND BRILLIANT**

Measurements 9.23 - 9.32 X 5.71 MM

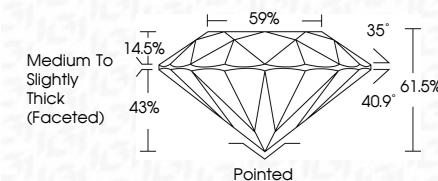
GRADING RESULTS

Carat Weight **3.05 CARATS**

Color Grade F

Clarity Grade VS 2

Cut Grade **IDEAL**



ADDITIONAL GRADING INFORMATION

Polish **EXCELLENT**Symmetry **EXCELLENT**

Fluorescence NONI

Inscription(s) LG735554784

Comments: This Laboratory Grown Diamond was created by Chemical Vapor Deposition (CVD) growth process.
Type IIa



© IGI 2020, International Gemological Institute

FD - 10 20

www.igi.org



THIS DOCUMENT WAS PRODUCED WITH THE FOLLOWING SECURITY MEASURES: SPECIAL DOCUMENT PAPER, INK SCREENS, WATERMARK, BACKGROUND DESIGNS, HOLOGRAM AND OTHER SECURITY FEATURES NOT LISTED AND DO EXCEED DOCUMENT SECURITY INDUSTRY GUIDELINES

September 19, 2025
IGI Report No LG735554784
ROUND BRILLIANT

9.23 - 9.32 X 5.71 MM	3.05 CARATS
Carat Weight	F
Color Grade	VS 2
Clarity Grade	IDP AL
Cut Grade	61.05%
Depth	59%
Table	Medium to Slightly Thick (Faceted)
Girdle	
Culet	Pointed
Polish	EXCELLENT
Symmetry	EXCELLENT
Fluorescence	NONE

Comments:
This Laboratory Grown Diamond was created by Chemical Vapor Deposition (CVD) growth process.