



**ELECTRONIC COPY**

LG735550978  
Report verification at igi.org



October 2, 2025

IGI Report Number **LG735550978**

Description **LABORATORY GROWN DIAMOND**

Shape and Cutting Style **EMERALD CUT**

Measurements **10.53 X 7.02 X 4.87 MM**

**GRADING RESULTS**

Carat Weight **3.70 CARATS**

Color Grade **FANCY VIVID GREEN**

Clarity Grade **VS 1**

October 2, 2025  
IGI Report Number **LG735550978**  
Description **LABORATORY GROWN DIAMOND**  
Shape and Cutting Style **EMERALD CUT**  
Measurements **10.53 X 7.02 X 4.87 MM**

**GRADING RESULTS**

Carat Weight **3.70 CARATS**

Color Grade **FANCY VIVID GREEN**

Clarity Grade **VS 1**

**ADDITIONAL GRADING INFORMATION**

Polish **EXCELLENT**

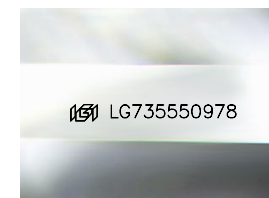
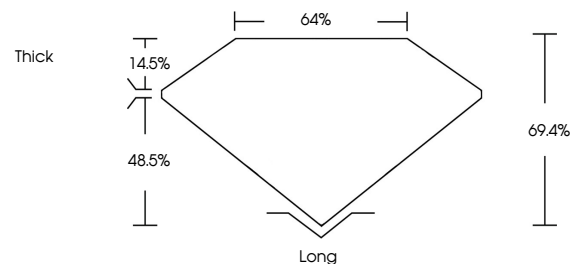
Symmetry **EXCELLENT**

Fluorescence **VERY SLIGHT**

Inscription(s) **LG735550978**

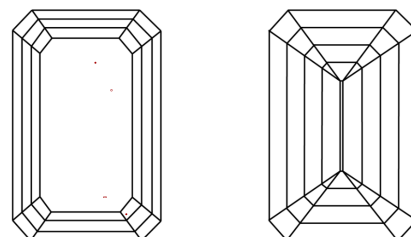
Comments: This Laboratory Grown Diamond was created by Chemical Vapor Deposition (CVD) growth process.  
Indications of post-growth treatment.

**PROPORTIONS**



Sample Image Used

**CLARITY CHARACTERISTICS**



**KEY TO SYMBOLS**

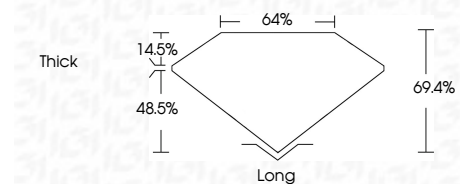
Red symbols indicate internal characteristics.  
Green symbols indicate external characteristics.

**COLOR**

D E F G H I J Faint Very Light Light

**CLARITY**

FL	IF	VS <sup>1-2</sup>	VS <sup>1-2</sup>	SI <sup>1-2</sup>	I <sup>1-3</sup>
Flawless	Internally Flawless	Very Very Slightly Included	Very Slightly Included	Slightly Included	Included



**ADDITIONAL GRADING INFORMATION**

Polish **EXCELLENT**

Symmetry **EXCELLENT**

Fluorescence **VERY SLIGHT**

Inscription(s) **LG735550978**

Comments: This Laboratory Grown Diamond was created by Chemical Vapor Deposition (CVD) growth process.  
Indications of post-growth treatment.



**IGI**



October 2, 2025  
IGI Report No **LG735550978**  
**EMERALD CUT**  
10.53 X 7.02 X 4.87 MM  
3.70 CARATS  
FANCY VIVID GREEN  
VS 1  
69.4%  
48.5%  
Thick  
Long  
EXCELLENT  
EXCELLENT  
VERY SLIGHT  
IGI LG735550978  
Comments: This Laboratory Grown Diamond was created by Chemical Vapor Deposition (CVD) growth process.  
Indications of post-growth treatment.