



ELECTRONIC COPY

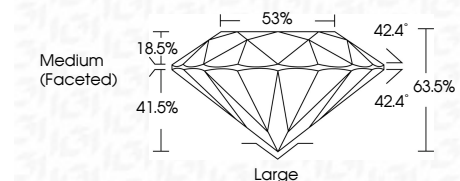
LG735539869
Report verification at igi.org



September 20, 2025
IGI Report Number **LG735539869**
Description **LABORATORY GROWN DIAMOND**
Shape and Cutting Style **OLD EUROPEAN CUT**
Measurements **9.00 - 8.97 X 5.70 MM**

GRADING RESULTS

Carat Weight **2.95 CARATS**
Color Grade **E**
Clarity Grade **VVS 2**

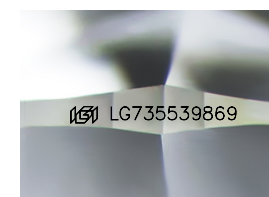


ADDITIONAL GRADING INFORMATION

Polish **EXCELLENT**
Symmetry **EXCELLENT**
Fluorescence **NONE**
Inscription(s) **IGI LG735539869**
Comments: This Laboratory Grown Diamond was created by Chemical Vapor Deposition (CVD) growth process.
Type IIa

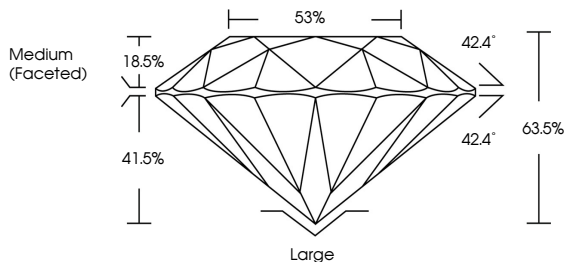


September 20, 2025
IGI Report No **LG735539869**
OLD EUROPEAN CUT
9.00 - 8.97 X 5.70 MM
Carat Weight **2.95 CARATS**
Color Grade **E**
Clarity Grade **VVS 2**
Depth **41.5%**
Table **18.5%**
Girdle **53%**
Medium (Faceted)
Culet **Large**
Polish **EXCELLENT**
Symmetry **EXCELLENT**
Fluorescence **NONE**
Inscription(s) **IGI LG735539869**
Comments: This Laboratory Grown Diamond was created by Chemical Vapor Deposition (CVD) growth process.
Type IIa

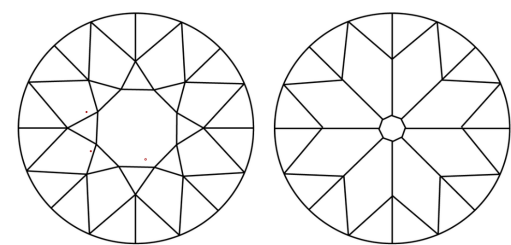


Sample Image Used

PROPORTIONS



CLARITY CHARACTERISTICS



KEY TO SYMBOLS

Red symbols indicate internal characteristics.
Green symbols indicate external characteristics.

COLOR

D	E	F	G	H	I	J	Faint	Very Light	Light
---	---	---	---	---	---	---	-------	------------	-------

CLARITY

IF	VVS ¹⁻²	VS ¹⁻²	SI ¹⁻²	I ¹⁻³
Internally Flawless	Very Very Slightly Included	Very Slightly Included	Slightly Included	Included

