



ELECTRONIC COPY

LG735539856
Report verification at igi.org



September 20, 2025

IGI Report Number **LG735539856**

Description **LABORATORY GROWN DIAMOND**

Shape and Cutting Style **OLD EUROPEAN CUT**

Measurements **11.06 - 11.11 X 7.00 MM**

GRADING RESULTS

Carat Weight **5.46 CARATS**

Color Grade **F**

Clarity Grade **VVS 2**

September 20, 2025
IGI Report Number **LG735539856**
Description **LABORATORY GROWN DIAMOND**
Shape and Cutting Style **OLD EUROPEAN CUT**
Measurements **11.06 - 11.11 X 7.00 MM**

GRADING RESULTS

Carat Weight **5.46 CARATS**

Color Grade **F**

Clarity Grade **VVS 2**

ADDITIONAL GRADING INFORMATION

Polish **EXCELLENT**

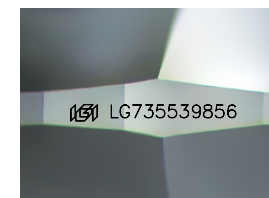
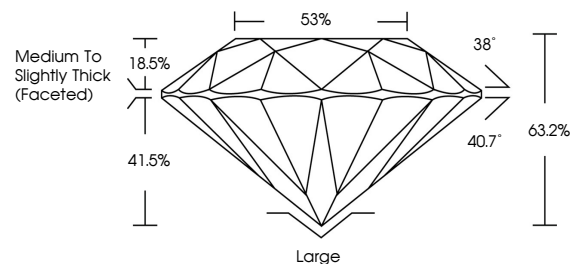
Symmetry **EXCELLENT**

Fluorescence **NONE**

Inscription(s) **IGI LG735539856**

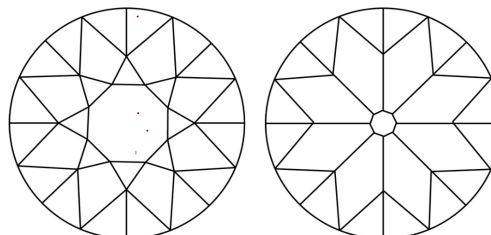
Comments: This Laboratory Grown Diamond was created by Chemical Vapor Deposition (CVD) growth process.
Type IIa

PROPORTIONS



Sample Image Used

CLARITY CHARACTERISTICS



KEY TO SYMBOLS

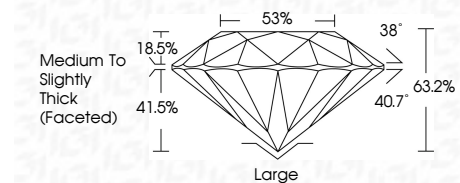
Red symbols indicate internal characteristics.
Green symbols indicate external characteristics.

COLOR

D E F G H I J Faint Very Light Light

CLARITY

IF	VS ¹⁻²	VS ¹⁻²	SI ¹⁻²	I ¹⁻³
Internally Flawless	Very Very Slightly Included	Very Slightly Included	Slightly Included	Included



ADDITIONAL GRADING INFORMATION

Polish **EXCELLENT**

Symmetry **EXCELLENT**

Fluorescence **NONE**

Inscription(s) **IGI LG735539856**

Comments: This Laboratory Grown Diamond was created by Chemical Vapor Deposition (CVD) growth process.
Type IIa



IGI



September 20, 2025
IGI Report No LG735539856
OLD EUROPEAN CUT

11.06 - 11.11 X 7.00 MM

5.46 CARATS
F

Carat Weight
Color Grade
Clarity Grade
Table
Girdle

VVS 2
63.2%
85%

Medium to Slightly Thick (Faceted)

Large
EXCELLENT
EXCELLENT
NONE

Culet
Polish
Symmetry
Fluorescence
Inscription(s)

IGI LG735539856

Comments: This Laboratory Grown Diamond was created by Chemical Vapor Deposition (CVD) growth process.
Type IIa