



**ELECTRONIC COPY**

LG735539848  
Report verification at igi.org



September 20, 2025

IGI Report Number **LG735539848**

Description **LABORATORY GROWN DIAMOND**

Shape and Cutting Style **OLD EUROPEAN CUT**

Measurements **9.71 - 9.77 X 6.20 MM**

**GRADING RESULTS**

Carat Weight **3.71 CARATS**

Color Grade **E**

Clarity Grade **VVS 2**

September 20, 2025  
IGI Report Number **LG735539848**  
Description **LABORATORY GROWN DIAMOND**  
Shape and Cutting Style **OLD EUROPEAN CUT**  
Measurements **9.71 - 9.77 X 6.20 MM**

**GRADING RESULTS**

Carat Weight **3.71 CARATS**

Color Grade **E**

Clarity Grade **VVS 2**

**ADDITIONAL GRADING INFORMATION**

Polish **EXCELLENT**

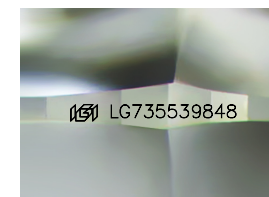
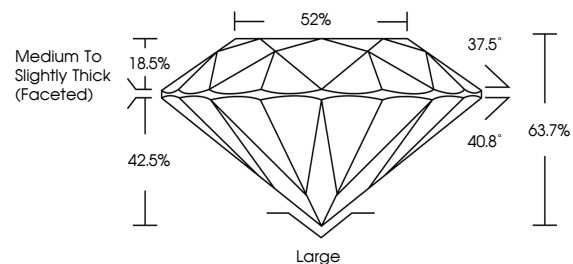
Symmetry **EXCELLENT**

Fluorescence **NONE**

Inscription(s) **LG735539848**

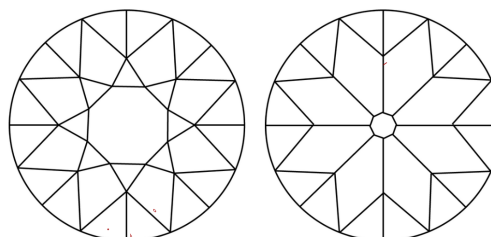
Comments: This Laboratory Grown Diamond was created by Chemical Vapor Deposition (CVD) growth process.  
Type IIa

**PROPORTIONS**



Sample Image Used

**CLARITY CHARACTERISTICS**



**KEY TO SYMBOLS**

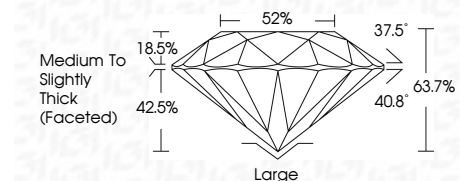
Red symbols indicate internal characteristics.  
Green symbols indicate external characteristics.

**COLOR**

D E F G H I J Faint Very Light Light

**CLARITY**

IF	VS <sup>1-2</sup>	VS <sup>1-2</sup>	SI <sup>1-2</sup>	I <sup>1-3</sup>
Internally Flawless	Very Very Slightly Included	Very Slightly Included	Slightly Included	Included



**ADDITIONAL GRADING INFORMATION**

Polish **EXCELLENT**

Symmetry **EXCELLENT**

Fluorescence **NONE**

Inscription(s) **LG735539848**

Comments: This Laboratory Grown Diamond was created by Chemical Vapor Deposition (CVD) growth process.  
Type IIa



**IGI**



September 20, 2025  
IGI Report No LG735539848  
OLD EUROPEAN CUT

9.71 - 9.77 X 6.20 MM

3.71 CARATS  
E

Carat Weight  
Color Grade  
Clarity Grade  
Table  
Girdle

VVS 2  
E  
VVS 2  
63.7%  
62%

Medium to Slightly Thick (Faceted)

Large  
EXCELLENT  
EXCELLENT  
NONE  
NONE

IGI LG735539848

Comments: This Laboratory Grown Diamond was created by Chemical Vapor Deposition (CVD) growth process.  
Type IIa