



**ELECTRONIC COPY**

LG735537714  
Report verification at igi.org



September 24, 2025

IGI Report Number **LG735537714**

Description **LABORATORY GROWN DIAMOND**

Shape and Cutting Style **ROUND BRILLIANT**

Measurements **14.01 - 14.06 X 8.45 MM**

**GRADING RESULTS**

Carat Weight **10.13 CARATS**

Color Grade **F**

Clarity Grade **VS 1**

Cut Grade **IDEAL**

September 24, 2025  
IGI Report Number **LG735537714**  
Description **LABORATORY GROWN DIAMOND**  
Shape and Cutting Style **ROUND BRILLIANT**  
Measurements **14.01 - 14.06 X 8.45 MM**

**GRADING RESULTS**

Carat Weight **10.13 CARATS**

Color Grade **F**

Clarity Grade **VS 1**

Cut Grade **IDEAL**

**ADDITIONAL GRADING INFORMATION**

Polish **EXCELLENT**

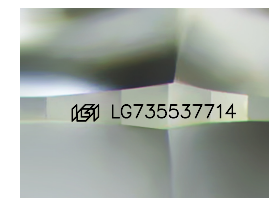
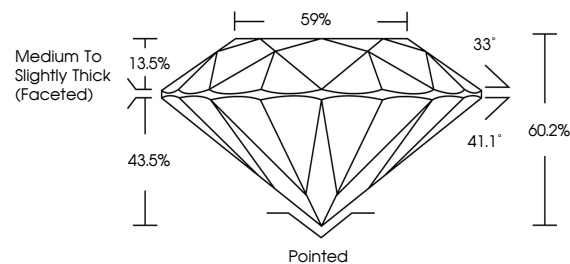
Symmetry **EXCELLENT**

Fluorescence **NONE**

Inscription(s) **LG735537714**

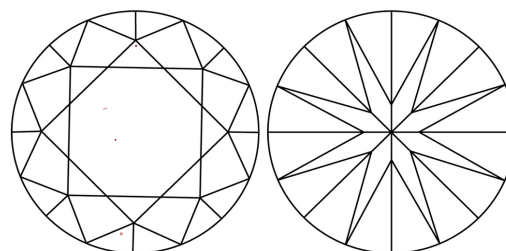
Comments: This Laboratory Grown Diamond was created by Chemical Vapor Deposition (CVD) growth process.  
Type IIa

**PROPORTIONS**



Sample Image Used

**CLARITY CHARACTERISTICS**



**KEY TO SYMBOLS**

Red symbols indicate internal characteristics.  
Green symbols indicate external characteristics.

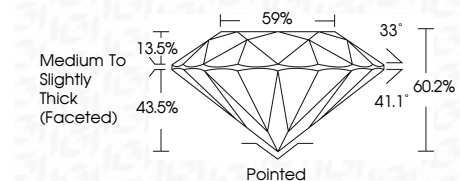
**COLOR**

D E F G H I J Faint Very Light Light

**CLARITY**

IF WS<sup>1-2</sup> VS<sup>1-2</sup> SI<sup>1-2</sup> I<sup>1-3</sup>

Internally Flawless Very Very Slightly Included Very Slightly Included Slightly Included Included



**ADDITIONAL GRADING INFORMATION**

Polish **EXCELLENT**

Symmetry **EXCELLENT**

Fluorescence **NONE**

Inscription(s) **LG735537714**

Comments: This Laboratory Grown Diamond was created by Chemical Vapor Deposition (CVD) growth process.  
Type IIa



**IGI**



September 24, 2025  
IGI Report No LG735537714  
**ROUND BRILLIANT**

**14.01 - 14.06 X 8.45 MM**

Carat Weight **10.13 CARATS**  
Color Grade **F**  
Clarity Grade **VS 1**  
Cut Grade **IDEAL**  
Depth **60.2%**  
Table **59%**  
Girdle **Medium To Slightly Thick (Faceted)**

Culet **Pointed**  
Polish **EXCELLENT**  
Symmetry **EXCELLENT**  
Fluorescence **NONE**  
Inscription(s) **LG735537714**

Comments: This Laboratory Grown Diamond was created by Chemical Vapor Deposition (CVD) growth process.  
Type IIa