



ELECTRONIC COPY

LG735535448
Report verification at igi.org



October 1, 2025

IGI Report Number **LG735535448**

Description **LABORATORY GROWN DIAMOND**

Shape and Cutting Style **EMERALD CUT**

Measurements **8.01 X 5.65 X 3.57 MM**

GRADING RESULTS

Carat Weight **1.65 CARAT**

Color Grade **FANCY YELLOW**

Clarity Grade **VS 1**

October 1, 2025
IGI Report Number **LG735535448**
Description **LABORATORY GROWN DIAMOND**
Shape and Cutting Style **EMERALD CUT**
Measurements **8.01 X 5.65 X 3.57 MM**

GRADING RESULTS

Carat Weight **1.65 CARAT**

Color Grade **FANCY YELLOW**

Clarity Grade **VS 1**

ADDITIONAL GRADING INFORMATION

Polish **EXCELLENT**

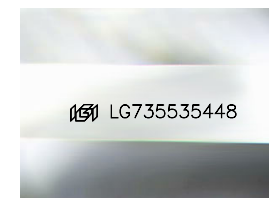
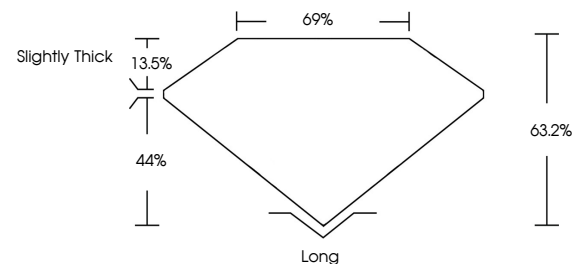
Symmetry **EXCELLENT**

Fluorescence **VERY SLIGHT**

Inscription(s) **LG735535448**

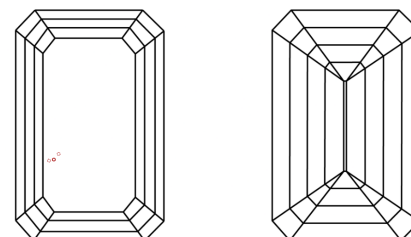
Comments: This Laboratory Grown Diamond was created by Chemical Vapor Deposition (CVD) growth process.
Indications of post-growth treatment.

PROPORTIONS



Sample Image Used

CLARITY CHARACTERISTICS



KEY TO SYMBOLS

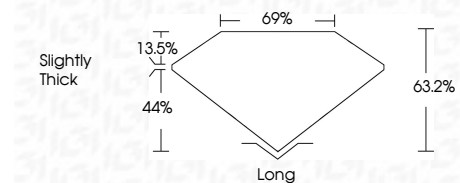
Red symbols indicate internal characteristics.
Green symbols indicate external characteristics.

COLOR

D E F G H I J Faint Very Light Light

CLARITY

FL	IF	VS ¹⁻²	VS ¹⁻²	SI ¹⁻²	I ¹⁻³
Flawless	Internally Flawless	Very Very Slightly Included	Very Slightly Included	Slightly Included	Included



ADDITIONAL GRADING INFORMATION

Polish **EXCELLENT**

Symmetry **EXCELLENT**

Fluorescence **VERY SLIGHT**

Inscription(s) **LG735535448**

Comments: This Laboratory Grown Diamond was created by Chemical Vapor Deposition (CVD) growth process.
Indications of post-growth treatment.



IGI



October 1, 2025
IGI Report No **LG735535448**
EMERALD CUT

1.65 CARAT
Carat Weight
FANCY YELLOW
Color Grade

VS 1
Clarity Grade
63.2%
Depth
69%
Table
Slightly Thick
Girdle

Long
Culet
EXCELLENT
Polish
EXCELLENT
Symmetry
VERY SLIGHT
Fluorescence
Inscription(s) **LG735535448**

Comments: This Laboratory Grown Diamond was created by Chemical Vapor Deposition (CVD) growth process.
Indications of post-growth treatment.