



**ELECTRONIC COPY**

LG735534747  
Report verification at igi.org



September 25, 2025

IGI Report Number **LG735534747**

Description **LABORATORY GROWN DIAMOND**

Shape and Cutting Style **CUT CORNERED  
RECTANGULAR MODIFIED  
BRILLIANT**

Measurements **11.77 X 8.19 X 5.59 MM**

**GRADING RESULTS**

Carat Weight **5.06 CARATS**

Color Grade **FANCY INTENSE YELLOW**

Clarity Grade **VS 1**

**LABORATORY GROWN DIAMOND REPORT**

September 25, 2025

IGI Report Number **LG735534747**

Description **LABORATORY GROWN DIAMOND**

Shape and Cutting Style **CUT CORNERED RECTANGULAR  
MODIFIED BRILLIANT**

Measurements **11.77 X 8.19 X 5.59 MM**

**GRADING RESULTS**

Carat Weight **5.06 CARATS**

Color Grade **FANCY INTENSE YELLOW**

Clarity Grade **VS 1**

**ADDITIONAL GRADING INFORMATION**

Polish **EXCELLENT**

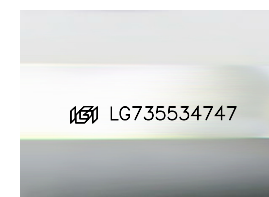
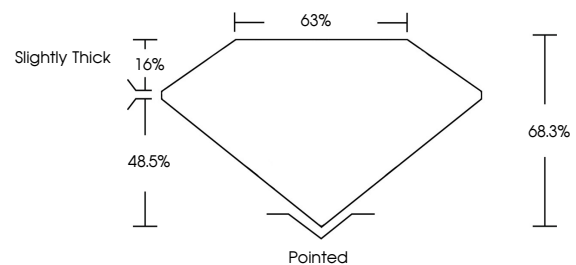
Symmetry **EXCELLENT**

Fluorescence **NONE**

Inscription(s) **IGI LG735534747**

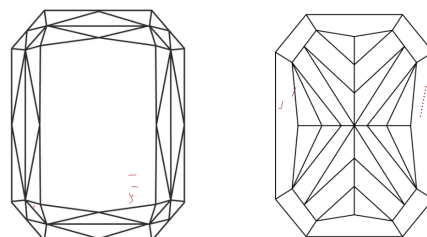
Comments: This Laboratory Grown Diamond was created by Chemical Vapor Deposition (CVD) growth process.

**PROPORTIONS**



Sample Image Used

**CLARITY CHARACTERISTICS**



**KEY TO SYMBOLS**

Red symbols indicate internal characteristics.  
Green symbols indicate external characteristics.

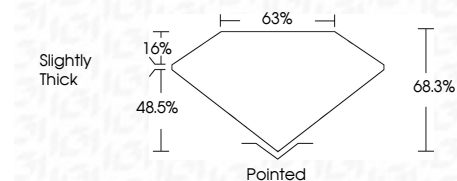
**COLOR**

D E F G H I J Faint Very Light Light

**CLARITY**

IF WS<sup>1-2</sup> VS<sup>1-2</sup> SI<sup>1-2</sup> I<sup>1-3</sup>

Internally Flawless Very Very Slightly Included Very Slightly Included Slightly Included Included



**ADDITIONAL GRADING INFORMATION**

Polish **EXCELLENT**

Symmetry **EXCELLENT**

Fluorescence **NONE**

Inscription(s) **IGI LG735534747**

Comments: This Laboratory Grown Diamond was created by Chemical Vapor Deposition (CVD) growth process.



**IGI**



September 25, 2025  
IGI Report No LG735534747  
CUT CORNERED RECT. MODIFIED BRILLIANT

11.77 X 8.19 X 5.59 MM  
5.06 CARATS  
FANCY INTENSE YELLOW  
VS 1  
68.3%  
63%  
Slightly Thick

Pointed  
EXCELLENT  
EXCELLENT  
NONE  
IGI LG735534747

Comments: This Laboratory Grown Diamond was created by Chemical Vapor Deposition (CVD) growth process.