



ELECTRONIC COPY

LG735532334
Report verification at igi.org



September 27, 2025
IGI Report Number **LG735532334**
Description **LABORATORY GROWN DIAMOND**
Shape and Cutting Style **CUSHION MODIFIED BRILLIANT**
Measurements **6.35 X 5.07 X 3.35 MM**
GRADING RESULTS
Carat Weight **1.04 CARAT**
Color Grade **FANCY VIVID PINK**
Clarity Grade **VS 1**

LABORATORY GROWN DIAMOND REPORT

September 27, 2025
IGI Report Number **LG735532334**
Description **LABORATORY GROWN DIAMOND**
Shape and Cutting Style **CUSHION MODIFIED BRILLIANT**
Measurements **6.35 X 5.07 X 3.35 MM**

GRADING RESULTS

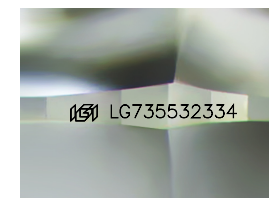
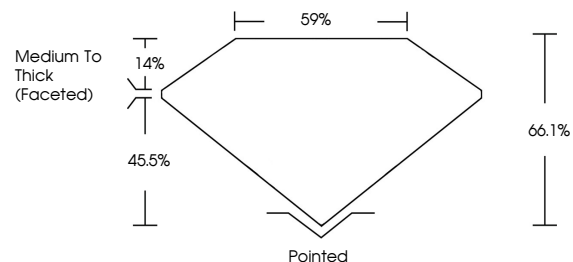
Carat Weight **1.04 CARAT**
Color Grade **FANCY VIVID PINK**
Clarity Grade **VS 1**

ADDITIONAL GRADING INFORMATION

Polish **EXCELLENT**
Symmetry **EXCELLENT**
Fluorescence **STRONG**
Inscription(s) **LG735532334**

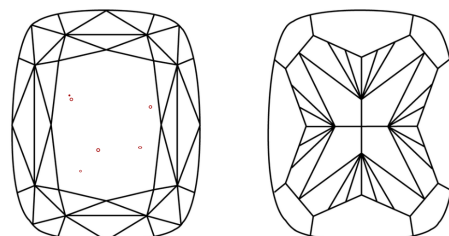
Comments: This Laboratory Grown Diamond was created by Chemical Vapor Deposition (CVD) growth process.
Indications of post-growth treatment.

PROPORTIONS



Sample Image Used

CLARITY CHARACTERISTICS



KEY TO SYMBOLS

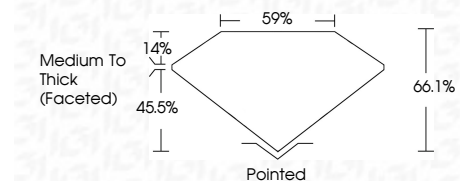
Red symbols indicate internal characteristics.
Green symbols indicate external characteristics.

COLOR

D E F G H I J Faint Very Light Light

CLARITY

IF	VS ¹⁻²	VS ¹⁻²	SI ¹⁻²	I ¹⁻³
Internally Flawless	Very Very Slightly Included	Very Slightly Included	Slightly Included	Included



ADDITIONAL GRADING INFORMATION

Polish **EXCELLENT**
Symmetry **EXCELLENT**
Fluorescence **STRONG**
Inscription(s) **LG735532334**
Comments: This Laboratory Grown Diamond was created by Chemical Vapor Deposition (CVD) growth process.
Indications of post-growth treatment.



September 27, 2025
IGI Report No LG735532334
CUSHION MODIFIED BRILLIANT
6.35 X 5.07 X 3.35 MM
1.04 CARAT
FANCY VIVID PINK
VS 1
66.1%
59%
Medium To Thick (Faceted)
Pointed
EXCELLENT
EXCELLENT
STRONG
IGI LG735532334
Comments: This Laboratory Grown Diamond was created by Chemical Vapor Deposition (CVD) growth process.
Indications of post-growth treatment.