



**ELECTRONIC COPY**

**LABORATORY GROWN DIAMOND REPORT**

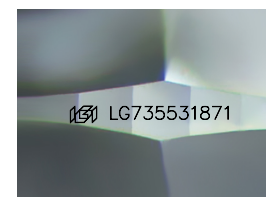
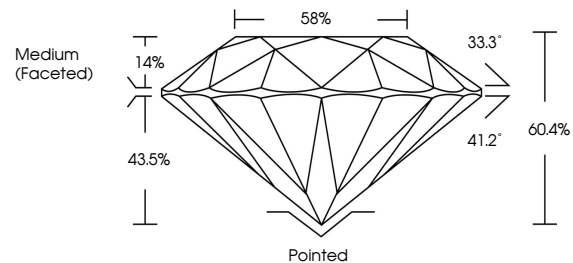
September 19, 2025  
 IGI Report Number **LG735531871**  
 Description **LABORATORY GROWN DIAMOND**  
 Shape and Cutting Style **ROUND BRILLIANT**  
 Measurements **8.05 - 8.13 X 4.87 MM**  
**GRADING RESULTS**  
 Carat Weight **1.91 CARAT**  
 Color Grade **E**  
 Clarity Grade **VS 1**  
 Cut Grade **IDEAL**

**ADDITIONAL GRADING INFORMATION**

Polish **EXCELLENT**  
 Symmetry **EXCELLENT**  
 Fluorescence **NONE**  
 Inscription(s) **IGI LG735531871**

Comments: This Laboratory Grown Diamond was created by Chemical Vapor Deposition (CVD) growth process. Type IIa

**PROPORTIONS**



Sample Image Used

**COLOR**

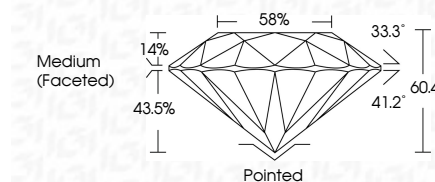
D E F G H I J Faint Very Light Light

**CLARITY**

IF	WS <sup>1-2</sup>	VS <sup>1-2</sup>	SI <sup>1-2</sup>	I <sup>1-3</sup>
Internally Flawless	Very Very Slightly Included	Very Slightly Included	Slightly Included	Included



September 19, 2025  
 IGI Report Number **LG735531871**  
 Description **LABORATORY GROWN DIAMOND**  
 Shape and Cutting Style **ROUND BRILLIANT**  
 Measurements **8.05 - 8.13 X 4.87 MM**  
**GRADING RESULTS**  
 Carat Weight **1.91 CARAT**  
 Color Grade **E**  
 Clarity Grade **VS 1**  
 Cut Grade **IDEAL**



**ADDITIONAL GRADING INFORMATION**

Polish **EXCELLENT**  
 Symmetry **EXCELLENT**  
 Fluorescence **NONE**  
 Inscription(s) **IGI LG735531871**  
 Comments: This Laboratory Grown Diamond was created by Chemical Vapor Deposition (CVD) growth process. Type IIa



**IGI**



September 19, 2025  
 IGI Report No LG735531871  
**ROUND BRILLIANT**  
 8.05 - 8.13 X 4.87 MM  
 Carat Weight **1.91 CARAT**  
 Color Grade **E**  
 Clarity Grade **VS 1**  
 Cut Grade **IDEAL**  
 Depth **60.4%**  
 Table **14%**  
 Girdle **Medium (Faceted)**  
 Pavilion Angle **41.2°**  
 Crown Angle **33.3°**  
 Cut **Pointed**  
 Polish **EXCELLENT**  
 Symmetry **EXCELLENT**  
 Fluorescence **NONE**  
 Inscription(s) **IGI LG735531871**  
 Comments: This Laboratory Grown Diamond was created by Chemical Vapor Deposition (CVD) growth process. Type IIa