



ELECTRONIC COPY

LG735530741
Report verification at igi.org



September 26, 2025
IGI Report Number **LG735530741**
Description **LABORATORY GROWN DIAMOND**
Shape and Cutting Style **SQUARE CUSHION MODIFIED
BRILLIANT**

Measurements **10.03 X 9.80 X 6.53 MM**

GRADING RESULTS

Carat Weight **5.15 CARATS**
Color Grade **FANCY INTENSE PINK**
Clarity Grade **VS 1**

September 26, 2025
IGI Report Number **LG735530741**
Description **LABORATORY GROWN DIAMOND**
Shape and Cutting Style **SQUARE CUSHION MODIFIED
BRILLIANT**
Measurements **10.03 X 9.80 X 6.53 MM**

GRADING RESULTS

Carat Weight **5.15 CARATS**
Color Grade **FANCY INTENSE PINK**
Clarity Grade **VS 1**

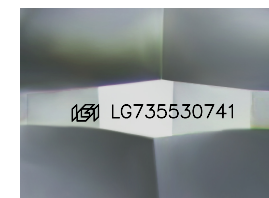
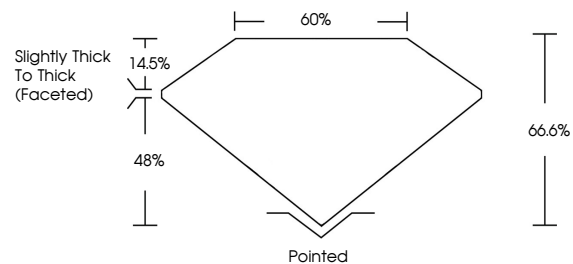
ADDITIONAL GRADING INFORMATION

Polish **EXCELLENT**
Symmetry **EXCELLENT**
Fluorescence **STRONG**
Inscription(s) **IGI LG735530741**

Comments: This Laboratory Grown Diamond was created by Chemical Vapor Deposition (CVD) growth process. Indications of post-growth treatment.

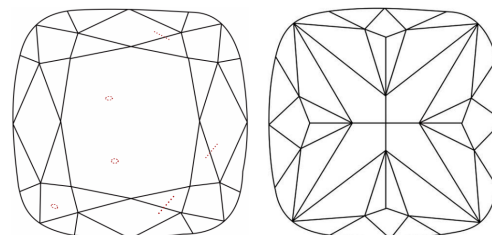
Secondary color: Brown

PROPORTIONS



Sample Image Used

CLARITY CHARACTERISTICS



KEY TO SYMBOLS

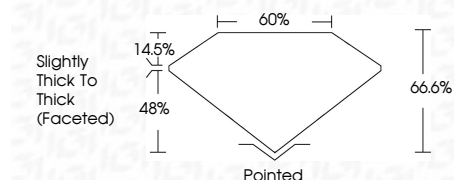
Red symbols indicate internal characteristics.
Green symbols indicate external characteristics.

COLOR

D E F G H I J Faint Very Light Light

CLARITY

IF	VS ¹⁻²	VS ¹⁻²	SI ¹⁻²	I ¹⁻³
Internally Flawless	Very Very Slightly Included	Very Slightly Included	Slightly Included	Included



ADDITIONAL GRADING INFORMATION

Polish **EXCELLENT**
Symmetry **EXCELLENT**
Fluorescence **STRONG**
Inscription(s) **IGI LG735530741**
Comments: This Laboratory Grown Diamond was created by Chemical Vapor Deposition (CVD) growth process. Indications of post-growth treatment.
Secondary color: Brown



IGI



September 26, 2025
IGI Report No LG735530741
SQUARE CUSHION MODIFIED BRILLIANT
10.03 X 9.80 X 6.53 MM
5.15 CARATS
FANCY INTENSE PINK
VS 1
66.6%
48%
Slightly Thick To Thick (Faceted)
Pointed
EXCELLENT
EXCELLENT
STRONG
IGI LG735530741

Comments: This Laboratory Grown Diamond was created by Chemical Vapor Deposition (CVD) growth process. Indications of post-growth treatment.
Secondary color: Brown