



ELECTRONIC COPY

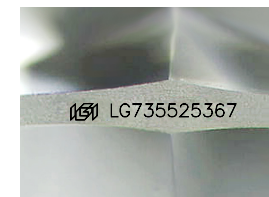
LG735525367
Report verification at igi.org



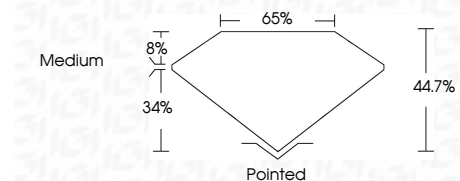
September 17, 2025
IGI Report Number **LG735525367**
Description **LABORATORY GROWN DIAMOND**
Shape and Cutting Style **TRIANGULAR MIXED CUT**
Measurements **9.14 X 9.88 X 4.42 MM**

GRADING RESULTS

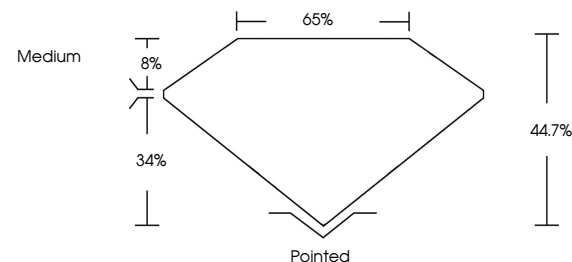
Carat Weight **1.73 CARAT**
Color Grade **E**
Clarity Grade **VS 1**



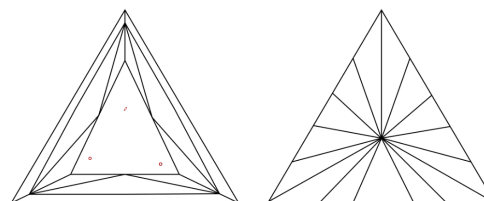
Sample Image Used



PROPORTIONS



CLARITY CHARACTERISTICS



KEY TO SYMBOLS

Red symbols indicate internal characteristics.
Green symbols indicate external characteristics.

COLOR

D E F G H I J Faint Very Light Light

CLARITY

IF	VS ¹⁻²	VS ¹⁻²	SI ¹⁻²	I ¹⁻³
Internally Flawless	Very Very Slightly Included	Very Slightly Included	Slightly Included	Included

ADDITIONAL GRADING INFORMATION

Polish **EXCELLENT**
Symmetry **EXCELLENT**
Fluorescence **NONE**
Inscription(s) **IGI LG735525367**
Comments: This Laboratory Grown Diamond was created by Chemical Vapor Deposition (CVD) growth process.
Type IIa



September 17, 2025
IGI Report No LG735525367
TRIANGULAR MIXED CUT
9.14 X 9.88 X 4.42 MM
1.73 CARAT
E
VS 1
44.7%
8%
65%
Medium
Pointed
EXCELLENT
EXCELLENT
NONE
IGI LG735525367
Comments: This Laboratory Grown Diamond was created by Chemical Vapor Deposition (CVD) growth process.
Type IIa