



**LABORATORY GROWN DIAMOND REPORT**

September 19, 2025  
IGI Report Number **LG735522922**  
Description **LABORATORY GROWN DIAMOND**  
Shape and Cutting Style **ROUND BRILLIANT**  
Measurements **6.21 - 6.26 X 3.79 MM**

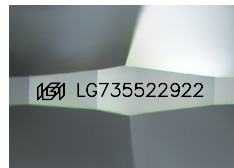
**GRADING RESULTS**

Carat Weight **0.90 CARAT**  
Color Grade **D**  
Clarity Grade **VVS 2**  
Cut Grade **IDEAL**

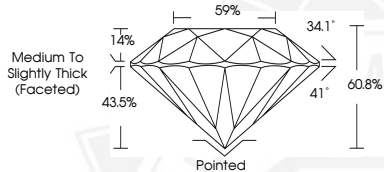
**ADDITIONAL GRADING INFORMATION**

Polish **EXCELLENT**  
Symmetry **EXCELLENT**  
Fluorescence **NONE**  
Inscription(s) **IGI LG735522922**

Comments: HEARTS & ARROWS  
This Laboratory Grown Diamond was created by Chemical Vapor  
Deposition (CVD) growth process.  
Type Ila



Sample Image Used



HEARTS & ARROWS



September 19, 2025  
IGI Report Number **LG735522922**  
**ROUND BRILLIANT**  
**LABORATORY GROWN DIAMOND**  
**6.21 - 6.26 X 3.79 MM**  
Carat Weight **0.90 CARAT**  
Color Grade **D**  
Clarity Grade **VVS 2**  
Cut Grade **IDEAL**  
Polish **EXCELLENT**  
Symmetry **EXCELLENT**  
Fluorescence **NONE**  
Inscription(s) **IGI LG735522922**

Comments: HEARTS & ARROWS This  
Laboratory Grown Diamond was  
created by Chemical Vapor  
Deposition (CVD) growth process.  
Type Ila



September 19, 2025  
IGI Report Number **LG735522922**  
**ROUND BRILLIANT**  
**LABORATORY GROWN DIAMOND**  
**6.21 - 6.26 X 3.79 MM**  
Carat Weight **0.90 CARAT**  
Color Grade **D**  
Clarity Grade **VVS 2**  
Cut Grade **IDEAL**  
Polish **EXCELLENT**  
Symmetry **EXCELLENT**  
Fluorescence **NONE**  
Inscription(s) **IGI LG735522922**

Comments: HEARTS & ARROWS This  
Laboratory Grown Diamond was  
created by Chemical Vapor  
Deposition (CVD) growth process.  
Type Ila

THIS DOCUMENT WAS PRODUCED WITH THE FOLLOWING SECURITY MEASURES: SPECIAL DOCUMENT PAPER, INK SCREENS, WATERMARK, BACKGROUND DESIGNS, HOLOGRAM AND OTHER SECURITY FEATURES NOT LISTED AND DO EXCEED DOCUMENT SECURITY INDUSTRY GUIDELINES.