



**ELECTRONIC COPY**

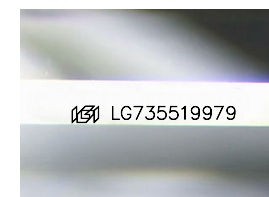
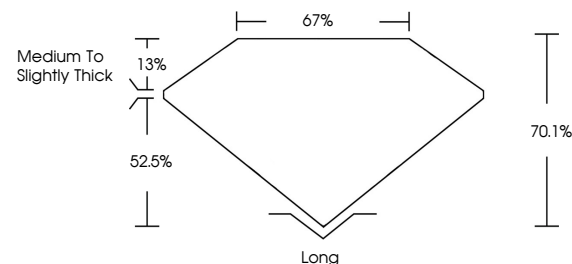
LG735519979  
Report verification at igi.org



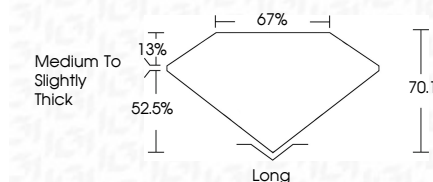
September 25, 2025  
IGI Report Number **LG735519979**  
Description **LABORATORY GROWN DIAMOND**  
Shape and Cutting Style **EMERALD CUT**  
Measurements **9.66 X 6.88 X 4.82 MM**  
**GRADING RESULTS**  
Carat Weight **3.15 CARATS**  
Color Grade **FANCY INTENSE PINK**  
Clarity Grade **VS 2**

September 25, 2025  
IGI Report Number **LG735519979**  
Description **LABORATORY GROWN DIAMOND**  
Shape and Cutting Style **EMERALD CUT**  
Measurements **9.66 X 6.88 X 4.82 MM**  
**GRADING RESULTS**  
Carat Weight **3.15 CARATS**  
Color Grade **FANCY INTENSE PINK**  
Clarity Grade **VS 2**

**PROPORTIONS**



Sample Image Used



**ADDITIONAL GRADING INFORMATION**

Polish **EXCELLENT**  
Symmetry **EXCELLENT**  
Fluorescence **STRONG**  
Inscription(s) **IGI LG735519979**

Comments: This Laboratory Grown Diamond was created by Chemical Vapor Deposition (CVD) growth process. Indications of post-growth treatment.

**ADDITIONAL GRADING INFORMATION**

Polish **EXCELLENT**  
Symmetry **EXCELLENT**  
Fluorescence **STRONG**  
Inscription(s) **IGI LG735519979**

Comments: This Laboratory Grown Diamond was created by Chemical Vapor Deposition (CVD) growth process. Indications of post-growth treatment.

**COLOR**

D E F G H I J Faint Very Light Light

**CLARITY**

IF	VS <sup>1-2</sup>	VS <sup>1-2</sup>	SI <sup>1-2</sup>	I <sup>1-3</sup>
Internally Flawless	Very Very Slightly Included	Very Slightly Included	Slightly Included	Included



**IGI**



September 25, 2025  
IGI Report No LG735519979  
**EMERALD CUT**  
**3.15 CARATS**  
Carat Weight  
Color Grade **FANCY INTENSE PINK**  
Clarity Grade **VS 2**  
Depth **70.1%**  
Table **67%**  
Girdle **Medium to Slightly Thick**  
Culet **Long**  
Polish **EXCELLENT**  
Symmetry **EXCELLENT**  
Fluorescence **STRONG**  
Inscription(s) **IGI LG735519979**  
Comments: This Laboratory Grown Diamond was created by Chemical Vapor Deposition (CVD) growth process. Indications of post-growth treatment.