



**ELECTRONIC COPY**

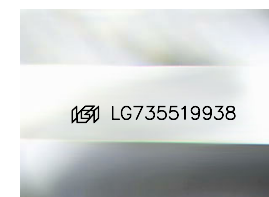
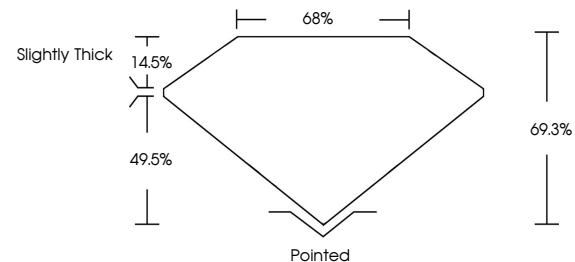
LG735519938  
Report verification at igi.org



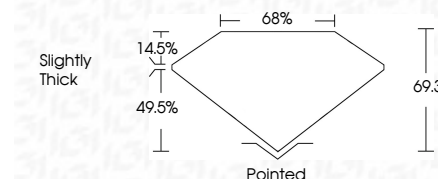
September 26, 2025  
IGI Report Number **LG735519938**  
Description **LABORATORY GROWN DIAMOND**  
Shape and Cutting Style **CUT CORNERED  
RECTANGULAR MODIFIED  
BRILLIANT**  
Measurements **10.06 X 6.90 X 4.78 MM**  
**GRADING RESULTS**  
Carat Weight **3.09 CARATS**  
Color Grade **FANCY INTENSE PINK**  
Clarity Grade **VS 1**

September 26, 2025  
IGI Report Number **LG735519938**  
Description **LABORATORY GROWN DIAMOND**  
Shape and Cutting Style **CUT CORNERED RECTANGULAR  
MODIFIED BRILLIANT**  
Measurements **10.06 X 6.90 X 4.78 MM**  
**GRADING RESULTS**  
Carat Weight **3.09 CARATS**  
Color Grade **FANCY INTENSE PINK**  
Clarity Grade **VS 1**

**PROPORTIONS**



Sample Image Used



**ADDITIONAL GRADING INFORMATION**

Polish **EXCELLENT**  
Symmetry **EXCELLENT**  
Fluorescence **STRONG**  
Inscription(s) **IGI LG735519938**

Comments: This Laboratory Grown Diamond was created by Chemical Vapor Deposition (CVD) growth process. Indications of post-growth treatment.

**COLOR**

D E F G H I J Faint Very Light Light

**CLARITY**

IF	WS <sup>1-2</sup>	VS <sup>1-2</sup>	SI <sup>1-2</sup>	I <sup>1-3</sup>
Internally Flawless	Very Very Slightly Included	Very Slightly Included	Slightly Included	Included

**ADDITIONAL GRADING INFORMATION**

Polish **EXCELLENT**  
Symmetry **EXCELLENT**  
Fluorescence **STRONG**  
Inscription(s) **IGI LG735519938**  
Comments: This Laboratory Grown Diamond was created by Chemical Vapor Deposition (CVD) growth process. Indications of post-growth treatment.



**IGI**

September 26, 2025  
IGI Report No LG735519938  
CUT CORNERED RECT. MODIFIED BRILLIANT  
10.06 X 6.90 X 4.78 MM  
3.09 CARATS  
FANCY INTENSE PINK  
VS 1  
69.3%  
49.5%  
Slightly Thick  
Pointed  
EXCELLENT  
EXCELLENT  
STRONG  
IGI LG735519938

Comments: This Laboratory Grown Diamond was created by Chemical Vapor Deposition (CVD) growth process. Indications of post-growth treatment.