



ELECTRONIC COPY

LG735516673
Report verification at igi.org



September 15, 2025
IGI Report Number **LG735516673**
Description **LABORATORY GROWN DIAMOND**
Shape and Cutting Style **HEXAGONAL MODIFIED STEP CUT**
Measurements **12.93 X 6.84 X 4.54 MM**
GRADING RESULTS
Carat Weight **3.29 CARATS**
Color Grade **D**
Clarity Grade **VS 1**

September 15, 2025
IGI Report Number **LG735516673**
Description **LABORATORY GROWN DIAMOND**
Shape and Cutting Style **HEXAGONAL MODIFIED STEP CUT**
Measurements **12.93 X 6.84 X 4.54 MM**

GRADING RESULTS

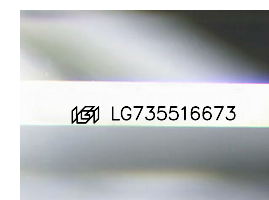
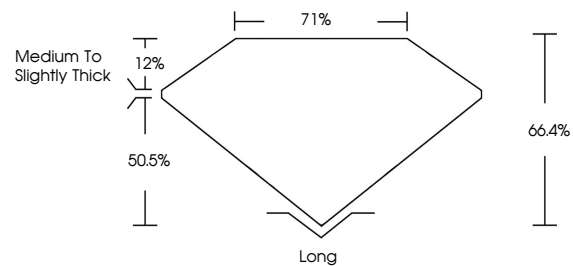
Carat Weight **3.29 CARATS**
Color Grade **D**
Clarity Grade **VS 1**

ADDITIONAL GRADING INFORMATION

Polish **EXCELLENT**
Symmetry **EXCELLENT**
Fluorescence **NONE**
Inscription(s) **IGI LG735516673**

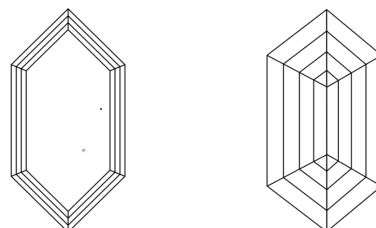
Comments: This Laboratory Grown Diamond was created by Chemical Vapor Deposition (CVD) growth process.
Type IIa

PROPORTIONS



Sample Image Used

CLARITY CHARACTERISTICS



KEY TO SYMBOLS

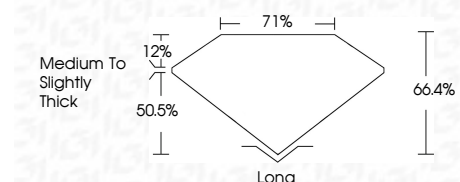
Red symbols indicate internal characteristics.
Green symbols indicate external characteristics.

COLOR

D E F G H I J Faint Very Light Light

CLARITY

IF	WS ¹⁻²	VS ¹⁻²	SI ¹⁻²	I ¹⁻³
Internally Flawless	Very Very Slightly Included	Very Slightly Included	Slightly Included	Included



ADDITIONAL GRADING INFORMATION

Polish **EXCELLENT**
Symmetry **EXCELLENT**
Fluorescence **NONE**
Inscription(s) **IGI LG735516673**
Comments: This Laboratory Grown Diamond was created by Chemical Vapor Deposition (CVD) growth process.
Type IIa



September 15, 2025
IGI Report No LG735516673
HEXAGONAL MODIFIED STEP CUT
12.93 X 6.84 X 4.54 MM
3.29 CARATS
D
3.29 CARATS
D
VS 1
66.4%
71%
Medium to Slightly Thick
Long
EXCELLENT
EXCELLENT
NONE
IGI LG735516673
Comments: This Laboratory Grown Diamond was created by Chemical Vapor Deposition (CVD) growth process.
Type IIa