



ELECTRONIC COPY

LG735510715
Report verification at igi.org



September 25, 2025
IGI Report Number LG735510715
Description LABORATORY GROWN DIAMOND
Shape and Cutting Style PEAR ROSE CUT
Measurements 12.94 X 8.38 X 3.06 MM
GRADING RESULTS
Carat Weight 3.00 CARATS
Color Grade E
Clarity Grade VVS 2

September 25, 2025
IGI Report Number LG735510715
Description LABORATORY GROWN DIAMOND
Shape and Cutting Style PEAR ROSE CUT
Measurements 12.94 X 8.38 X 3.06 MM

GRADING RESULTS

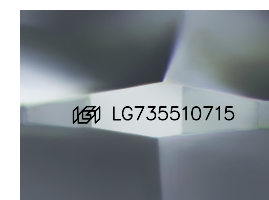
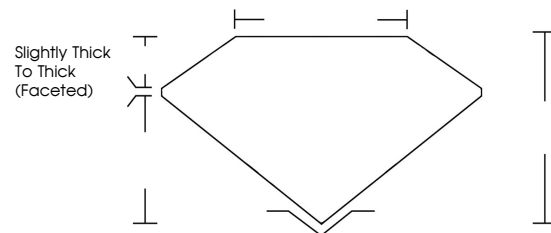
Carat Weight 3.00 CARATS
Color Grade E
Clarity Grade VVS 2

ADDITIONAL GRADING INFORMATION

Polish EXCELLENT
Symmetry EXCELLENT
Fluorescence NONE
Inscription(s) IGI LG735510715

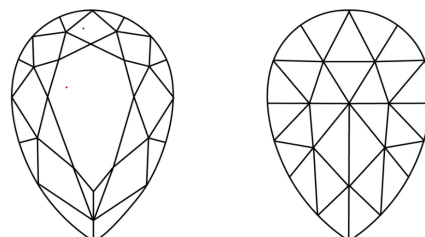
Comments: This Laboratory Grown Diamond was created by Chemical Vapor Deposition (CVD) growth process. Type IIa

PROPORTIONS



Sample Image Used

CLARITY CHARACTERISTICS



KEY TO SYMBOLS

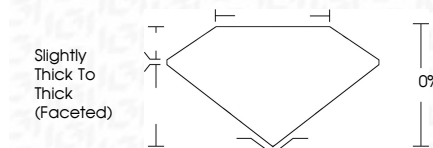
Red symbols indicate internal characteristics.
Green symbols indicate external characteristics.

COLOR

D E F G H I J Faint Very Light Light

CLARITY

IF WS 1-2 VS 1-2 SI 1-2 I 1-3
Internally Flawless Very Very Slightly Included Very Slightly Included Slightly Included Included



ADDITIONAL GRADING INFORMATION

Polish EXCELLENT
Symmetry EXCELLENT
Fluorescence NONE
Inscription(s) IGI LG735510715
Comments: This Laboratory Grown Diamond was created by Chemical Vapor Deposition (CVD) growth process. Type IIa



IGI



September 25, 2025
IGI Report No LG735510715
PEAR ROSE CUT
3.00 CARATS E
Carat Weight 3.00 CARATS
Color Grade E
Clarity Grade VVS 2
Depth 0%
Table 0%
Girdle Slightly Thick To Thick (Faceted)
Culet NONE
Polish EXCELLENT
Symmetry EXCELLENT
Fluorescence NONE
Inscription(s) IGI LG735510715
Comments: This Laboratory Grown Diamond was created by Chemical Vapor Deposition (CVD) growth process. Type IIa