



ELECTRONIC COPY

LG735510392
Report verification at igi.org



September 18, 2025

IGI Report Number LG735510392

Description LABORATORY GROWN DIAMOND

Shape and Cutting Style CUSHION MODIFIED BRILLIANT

Measurements 10.19 X 7.91 X 5.25 MM

GRADING RESULTS

Carat Weight 3.18 CARATS

Color Grade D

Clarity Grade VVS 1

Cut Grade EXCELLENT

LABORATORY GROWN DIAMOND REPORT

September 18, 2025

IGI Report Number LG735510392

Description LABORATORY GROWN DIAMOND

Shape and Cutting Style CUSHION MODIFIED BRILLIANT

Measurements 10.19 X 7.91 X 5.25 MM

GRADING RESULTS

Carat Weight 3.18 CARATS

Color Grade D

Clarity Grade VVS 1

Cut Grade EXCELLENT

ADDITIONAL GRADING INFORMATION

Polish EXCELLENT

Symmetry EXCELLENT

Fluorescence NONE

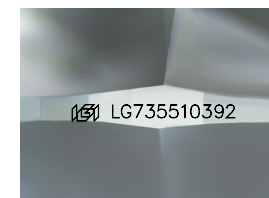
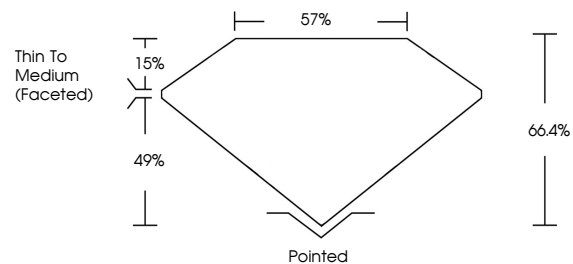
Inscription(s) LG735510392

Comments: As Grown - No indication of post-growth treatment.

This Laboratory Grown Diamond was created by High Pressure High Temperature (HPHT) growth process.

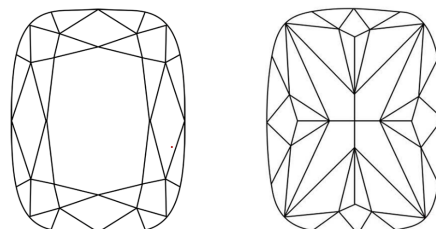
Type II

PROPORTIONS



Sample Image Used

CLARITY CHARACTERISTICS



KEY TO SYMBOLS

Red symbols indicate internal characteristics. Green symbols indicate external characteristics.

COLOR

D E F G H I J Faint Very Light Light

CLARITY

IF WS 1-2 VS 1-2 SI 1-2 I 1-3

Internally Flawless Very Very Slightly Included Very Slightly Included Slightly Included Included

ADDITIONAL GRADING INFORMATION

Polish EXCELLENT

Symmetry EXCELLENT

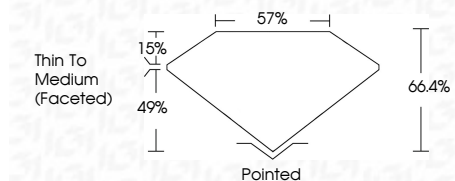
Fluorescence NONE

Inscription(s) LG735510392

Comments: As Grown - No indication of post-growth treatment.

This Laboratory Grown Diamond was created by High Pressure High Temperature (HPHT) growth process.

Type II



IGI



Table with 2 columns: Property and Value. Includes details like Carat Weight (3.18 CARATS), Color Grade (D), Clarity Grade (VVS 1), Depth (66.4%), Table (57%), Girdle (Thin To Medium (Faceted)), and Cut (Pointed).

Comments: As Grown - No indication of post-growth treatment. This Laboratory Grown Diamond was created by High Pressure High Temperature (HPHT) growth process. Type II