



ELECTRONIC COPY

LABORATORY GROWN DIAMOND REPORT

September 16, 2025	
IGI Report Number	LG735510301
Description	LABORATORY GROWN DIAMOND
Shape and Cutting Style	ROUND BRILLIANT
Measurements	9.48 - 9.51 X 5.64 MM

GRADING RESULTS

Carat Weight	3.09 CARATS
Color Grade	F
Clarity Grade	VVS 2
Cut Grade	IDEAL

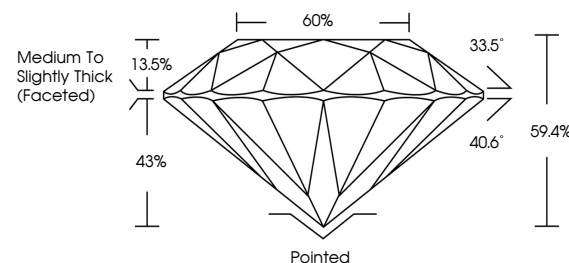
ADDITIONAL GRADING INFORMATION

Polish	EXCELLENT
Symmetry	EXCELLENT
Fluorescence	NONE
Inscription(s)	151 LG735510301

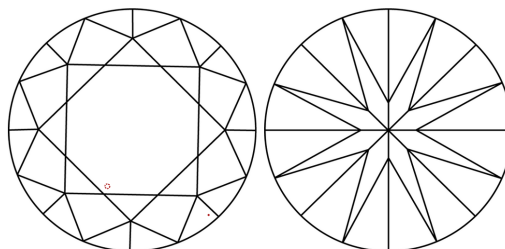
Comments: This Laboratory Grown Diamond was created by Chemical Vapor Deposition (CVD) growth process.
Type IIa

LG735510301
Report verification at igi.org

PROPORTIONS

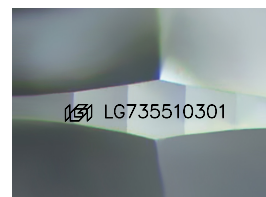


CLARITY CHARACTERISTICS



KEY TO SYMBOLS

Red symbols indicate internal characteristics.
Green symbols indicate external characteristics.



Sample Image Used

COLOR

D E F G H I J Faint Very Light Light

CLARITY

IF VWS¹⁻² VS¹⁻² SI¹⁻² I¹⁻³

Internally Flawless	Very Very Slightly Included	Very Slightly Included	Slightly Included	Included
------------------------	--------------------------------	---------------------------	----------------------	----------

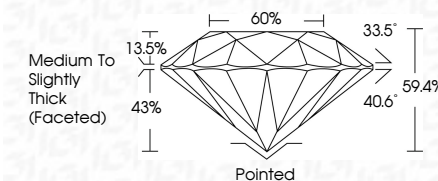
LABORATORY GROWN DIAMOND REPORT



September 16, 2025	
IGI Report Number	LG735510301
Description	LABORATORY GROWN DIAMOND
Shape and Cutting Style	ROUND BRILLIANT
Measurements	9.48 - 9.51 X 5.64 MM

GRADING RESULTS

Carat Weight	3.09 CARATS
Color Grade	F
Clarity Grade	VVS 2
Cut Grade	IDEAL



ADDITIONAL GRADING INFORMATION

Polish	EXCELLENT
Symmetry	EXCELLENT
Fluorescence	NONE
Inscription(s)	LG LG735510301
Comments: This Laboratory Grown Diamond was created by Chemical Vapor Deposition (CVD) growth process.	
Type IIa	



© IGI 2020, International Gemological Institute

FD - 10 20



THIS DOCUMENT WAS PRODUCED WITH THE FOLLOWING SECURITY MEASURES: SPECIAL DOCUMENT PAPER, INK SCREENS, WATERMARK, BACKGROUND DESIGNS, HOLOGRAM AND OTHER SECURITY FEATURES NOT LISTED AND DO EXCEED DOCUMENT SECURITY INDUSTRY GUIDELINES

www.igi.org

September 16, 2025
LGI Report No LG735510301
ROUND BRILLIANT

ROUND BRILLIANT		4.8 - 4.51 X 5.64 MM		3.09 CARATS	
		Carat Weight		F	
		Color Grade		VVS 2	
		Clarity Grade		IDEAL	
		Cut Grade		59.4%	
		Depth		60%	
		Table		Medium To Slightly Thick Faceted	
		Girdle		Pointed	
		Culet		EXCELLENT	
		Polish		EXCELLENT	
Symmetry		NONE			
Fluorescence		seen (greenish white)			

Comments:
This Laboratory Grown Diamond was created by Chemical Vapor Deposition (CVD) growth process.