



ELECTRONIC COPY

LG735505196
Report verification at igi.org



September 25, 2025
IGI Report Number **LG735505196**
Description **LABORATORY GROWN DIAMOND**
Shape and Cutting Style **RECTANGULAR CUSHION MIXED CUT**
Measurements **8.54 X 6.74 X 4.56 MM**
GRADING RESULTS
Carat Weight **2.71 CARATS**
Color Grade **FANCY DEEP GREEN**
Clarity Grade **VS 2**

LABORATORY GROWN DIAMOND REPORT

September 25, 2025
IGI Report Number **LG735505196**
Description **LABORATORY GROWN DIAMOND**
Shape and Cutting Style **RECTANGULAR CUSHION MIXED CUT**
Measurements **8.54 X 6.74 X 4.56 MM**

GRADING RESULTS

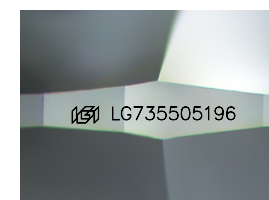
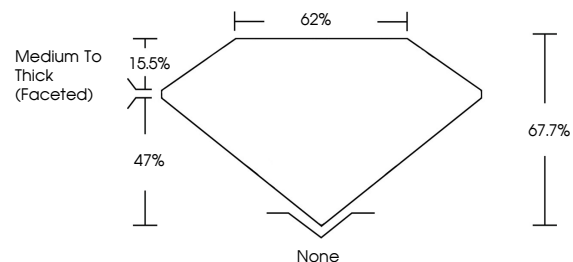
Carat Weight **2.71 CARATS**
Color Grade **FANCY DEEP GREEN**
Clarity Grade **VS 2**

ADDITIONAL GRADING INFORMATION

Polish **EXCELLENT**
Symmetry **EXCELLENT**
Fluorescence **NONE**
Inscription(s) **IGI LG735505196**

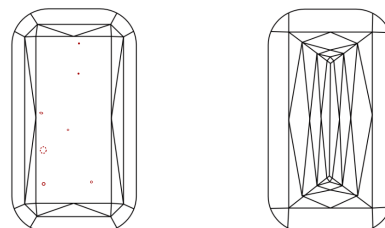
Comments: This Laboratory Grown Diamond was created by Chemical Vapor Deposition (CVD) growth process.
Indications of post-growth treatment.

PROPORTIONS



Sample Image Used

CLARITY CHARACTERISTICS



KEY TO SYMBOLS

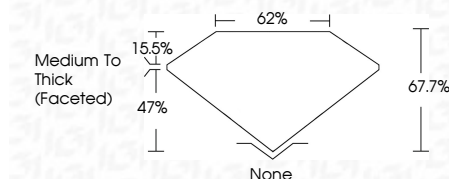
Red symbols indicate internal characteristics.
Green symbols indicate external characteristics.

COLOR

D E F G H I J Faint Very Light Light

CLARITY

| | | | | |
|---------------------|-----------------------------|------------------------|-------------------|------------------|
| IF | VS ¹⁻² | VS ¹⁻² | SI ¹⁻² | I ¹⁻³ |
| Internally Flawless | Very Very Slightly Included | Very Slightly Included | Slightly Included | Included |



ADDITIONAL GRADING INFORMATION

Polish **EXCELLENT**
Symmetry **EXCELLENT**
Fluorescence **NONE**
Inscription(s) **IGI LG735505196**
Comments: This Laboratory Grown Diamond was created by Chemical Vapor Deposition (CVD) growth process.
Indications of post-growth treatment.



September 25, 2025
IGI Report No LG735505196
RECTANGULAR CUSHION MIXED CUT
8.54 X 6.74 X 4.56 MM
2.71 CARATS
FANCY DEEP GREEN
VS 2
67.7%
62%
Medium To Thick (Faceted)
None
EXCELLENT
EXCELLENT
NONE
IGI LG735505196
Comments: This Laboratory Grown Diamond was created by Chemical Vapor Deposition (CVD) growth process.
Indications of post-growth treatment.