



ELECTRONIC COPY

LG735505155
Report verification at igi.org



September 24, 2025
IGI Report Number **LG735505155**
Description **LABORATORY GROWN DIAMOND**
Shape and Cutting Style **CUT CORNERED SQUARE
MODIFIED BRILLIANT**
Measurements **7.16 X 6.90 X 4.35 MM**
GRADING RESULTS
Carat Weight **2.02 CARATS**
Color Grade **FANCY DEEP GREEN**
Clarity Grade **VS 1**

LABORATORY GROWN DIAMOND REPORT

September 24, 2025
IGI Report Number **LG735505155**
Description **LABORATORY GROWN DIAMOND**
Shape and Cutting Style **CUT CORNERED SQUARE
MODIFIED BRILLIANT**
Measurements **7.16 X 6.90 X 4.35 MM**

GRADING RESULTS

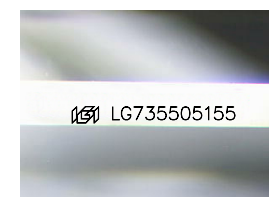
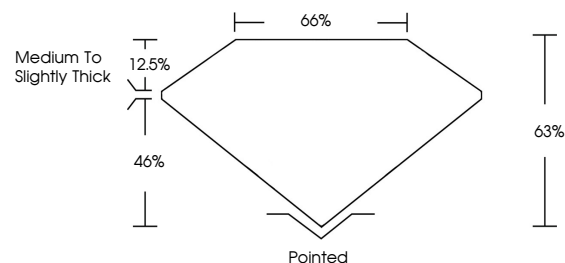
Carat Weight **2.02 CARATS**
Color Grade **FANCY DEEP GREEN**
Clarity Grade **VS 1**

ADDITIONAL GRADING INFORMATION

Polish **EXCELLENT**
Symmetry **EXCELLENT**
Fluorescence **VERY SLIGHT**
Inscription(s) **IGI LG735505155**

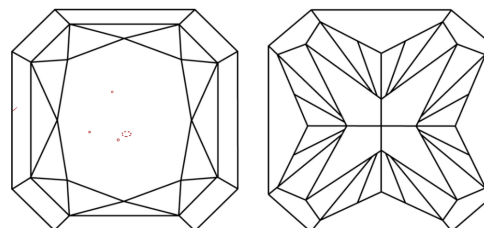
Comments: This Laboratory Grown Diamond was created by Chemical Vapor Deposition (CVD) growth process. Indications of post-growth treatment.

PROPORTIONS



Sample Image Used

CLARITY CHARACTERISTICS



KEY TO SYMBOLS

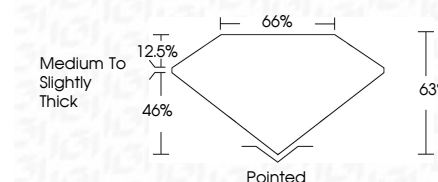
Red symbols indicate internal characteristics.
Green symbols indicate external characteristics.

COLOR

D E F G H I J Faint Very Light Light

CLARITY

IF	VS ¹⁻²	VS ¹⁻²	SI ¹⁻²	I ¹⁻³
Internally Flawless	Very Very Slightly Included	Very Slightly Included	Slightly Included	Included



ADDITIONAL GRADING INFORMATION

Polish **EXCELLENT**
Symmetry **EXCELLENT**
Fluorescence **VERY SLIGHT**
Inscription(s) **IGI LG735505155**
Comments: This Laboratory Grown Diamond was created by Chemical Vapor Deposition (CVD) growth process. Indications of post-growth treatment.



September 24, 2025
IGI Report No LG735505155
CUT CORNERED SQUARE MODIFIED BRILLIANT
7.16 X 6.90 X 4.35 MM
2.02 CARATS
FANCY DEEP GREEN
VS 1
63%
65%
Medium to Slightly Thick
Pointed
EXCELLENT
EXCELLENT
VERY SLIGHT
IGI LG735505155
Comments: This Laboratory Grown Diamond was created by Chemical Vapor Deposition (CVD) growth process. Indications of post-growth treatment.