

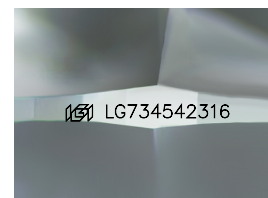
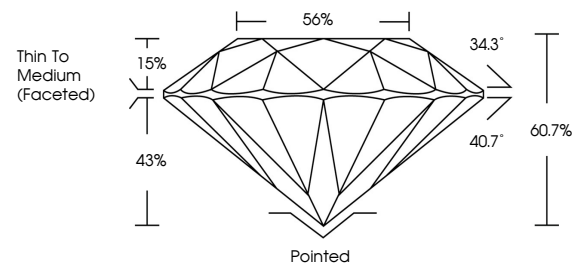


ELECTRONIC COPY

LABORATORY GROWN DIAMOND REPORT

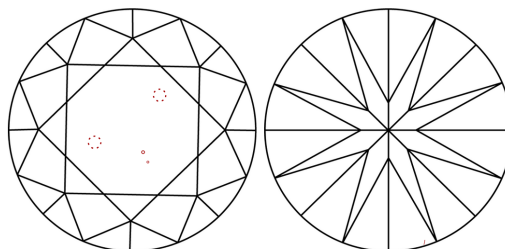
LG734542316
Report verification at igi.org

PROPORTIONS



Sample Image Used

CLARITY CHARACTERISTICS



KEY TO SYMBOLS

Red symbols indicate internal characteristics.
Green symbols indicate external characteristics.

COLOR

D E F G H I J Faint Very Light Light

CLARITY

IF WS¹⁻² VS¹⁻² SI¹⁻² |¹⁻³

Internally Flawless	Very Very Slightly Included	Very Slightly Included	Slightly Included	Included
------------------------	--------------------------------	---------------------------	----------------------	----------

LABORATORY GROWN DIAMOND REPORT



September 27, 2025

IGI Report Number **LG734542316**Description **LABORATORY GROWN DIAMOND**Shape and Cutting Style **ROUND BRILLIANT**

Measurements 8.19 - 8.23 X 4.99 MM

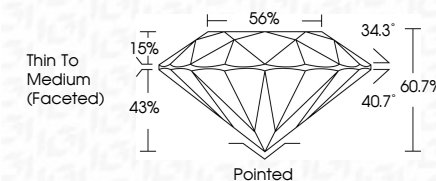
GRADING RESULTS

Carat Weight **2.03 CARATS**

Color Grade **FANCY INTENSE PINK**

Clarity Grade SI 1

Cut Grade **IDEAL**



ADDITIONAL GRADING INFORMATION

Polish **EXCELLENT**

Symmetry **EXCELLENT**

Fluorescence SLIGHT

Inscription(s) LG734542316

Comments: This Laboratory Grown Diamond was created by Chemical Vapor Deposition (CVD) growth process.
Indications of post-growth treatment.



© IGI 2020, International Gemological Institute

FD - 10 20

www.igi.org

THIS DOCUMENT WAS PRODUCED WITH THE FOLLOWING SECURITY MEASURES: SPECIAL DOCUMENT PAPER, INK SCREENS, WATERMARK BACKGROUND DESIGNS, HOLOGRAM AND OTHER SECURITY FEATURES NOT LISTED AND DO EXCEED DOCUMENT SECURITY INDUSTRY GUIDELINES

September 27, 2025
IGI Report No LG734542316
ROUND BRILLIANT

18.19 - 8.23 X 4.95 MM		2.03 CARATS
Carat Weight		FANCY INTENSE PINK
Color Grade		S1
Clarity Grade		IDEAL
Cut Grade		60.7%
Depth		55%
Table		Thin To Medium
Girdle		(face-to)
Culet		Pointed
Polish		EXCELLENT
Symmetry		EXCELLENT
Fluorescence		SLIGHT

Comments:
This Laboratory Grown Diamond was
created by Chemical Vapor Deposition
(CVD) growth process.