



**ELECTRONIC COPY**

## LABORATORY GROWN DIAMOND REPORT

LG734541244  
Report verification at [igi.org](https://igi.org)

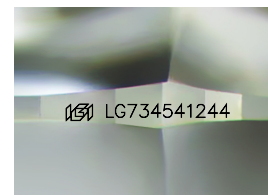
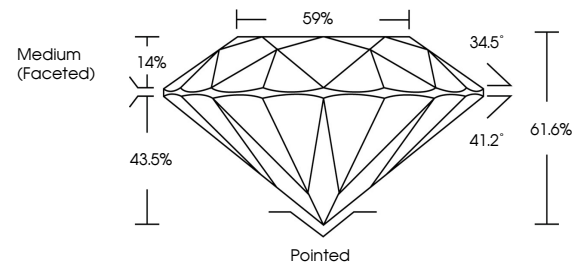
|                         |                          |
|-------------------------|--------------------------|
| September 15, 2025      |                          |
| IGI Report Number       | LG734541244              |
| Description             | LABORATORY GROWN DIAMOND |
| Shape and Cutting Style | ROUND BRILLIANT          |
| Measurements            | 8.76 - 8.81 X 5.40 MM    |
| GRADING RESULTS         |                          |
| Carat Weight            | 2.56 CARATS              |
| Color Grade             | D                        |
| Clarity Grade           | VS 1                     |
| Cut Grade               | IDEAL                    |

### ADDITIONAL GRADING INFORMATION

|                |                |
|----------------|----------------|
| Polish         | EXCELLENT      |
| Symmetry       | EXCELLENT      |
| Fluorescence   | NONE           |
| Inscription(s) | 15 LG734541244 |

Comments: This Laboratory Grown Diamond was created by Chemical Vapor Deposition (CVD) growth process.  
Type IIa

## PROPORTIONS



Sample Image Used

## COLOR

D E F G H I J Faint Very Light Light

## CLARITY

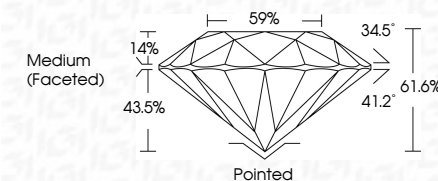
IF                      VS<sup>1-2</sup>                      VS<sup>1-2</sup>                      S<sup>1-2</sup>                      |<sup>1-3</sup>

| Internally<br>Flawless | Very Very<br>Slightly Included | Very<br>Slightly Included | Slightly<br>Included | Included |
|------------------------|--------------------------------|---------------------------|----------------------|----------|
|------------------------|--------------------------------|---------------------------|----------------------|----------|

## LABORATORY GROWN DIAMOND REPORT



|                         |                          |
|-------------------------|--------------------------|
| September 15, 2025      |                          |
| IGI Report Number       | LG734541244              |
| Description             | LABORATORY GROWN DIAMOND |
| Shape and Cutting Style | ROUND BRILLIANT          |
| Measurements            | 8.76 - 8.81 X 5.40 MM    |
| GRADING RESULTS         |                          |
| Carat Weight            | 2.56 CARATS              |
| Color Grade             | D                        |
| Clarity Grade           | VS 1                     |
| Cut Grade               | IDEAL                    |



### ADDITIONAL GRADING INFORMATION

|                                                                                                        |                           |
|--------------------------------------------------------------------------------------------------------|---------------------------|
| Polish                                                                                                 | EXCELLENT                 |
| Symmetry                                                                                               | EXCELLENT                 |
| Fluorescence                                                                                           | NONE                      |
| Inscription(s)                                                                                         | <del>LG</del> LG734541244 |
| Comments: This Laboratory Grown Diamond was created by Chemical Vapor Deposition (CVD) growth process. |                           |
| Type IIa                                                                                               |                           |



© IGI 2020, International Gemological Institute

FD - 10 20

**www.igi.org**



THIS DOCUMENT WAS PRODUCED WITH THE FOLLOWING SECURITY MEASURES: SPECIAL DOCUMENT PAPER, INK SCREENS, WATERMARK, BACKGROUND DESIGNS, HOLOGRAM AND OTHER SECURITY FEATURES NOT LISTED AND DO EXCEED DOCUMENT SECURITY INDUSTRY GUIDELINE

September 15, 2025  
IGI Report No LG734541244  
ROUND BRILLIANT

|                       |               |                  |
|-----------------------|---------------|------------------|
| 3.76 - 8.81 X 5.40 MM | Carat Weight  | 2.56 CARATS      |
|                       | Color Grade   | D                |
|                       | Clarity Grade | VS 1             |
|                       | Cut Grade     | IDEAL            |
|                       | Depth         | 61.6%            |
|                       | Table         | 59%              |
|                       | Girdle        | Medium (Faceted) |
|                       | Culet         | Pointed          |
|                       | Polish        | EXCELLENT        |
|                       | Symmetry      | EXCELLENT        |
|                       | Fluorescence  | NONE             |

**Comments:**  
This Laboratory Grown Diamond was created by Chemical Vapor Deposition (CVD) growth process.