



ELECTRONIC COPY

LG734539561
Report verification at igi.org



October 17, 2025
IGI Report Number **LG734539561**
Description **LABORATORY GROWN DIAMOND**
Shape and Cutting Style **ROUND MIXED CUT**
Measurements **6.57 - 6.63 X 3.64 MM**

GRADING RESULTS

Carat Weight **1.38 CARAT**
Color Grade **G**
Clarity Grade **VVS 2**

October 17, 2025
IGI Report Number **LG734539561**
Description **LABORATORY GROWN DIAMOND**
Shape and Cutting Style **ROUND MIXED CUT**
Measurements **6.57 - 6.63 X 3.64 MM**

GRADING RESULTS

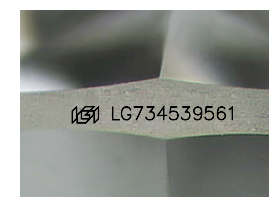
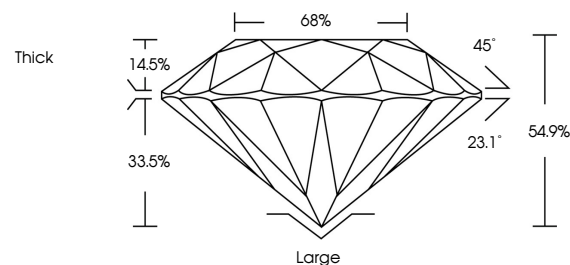
Carat Weight **1.38 CARAT**
Color Grade **G**
Clarity Grade **VVS 2**

ADDITIONAL GRADING INFORMATION

Polish **VERY GOOD**
Symmetry **VERY GOOD**
Fluorescence **NONE**
Inscription(s) **(IGI) LG734539561**

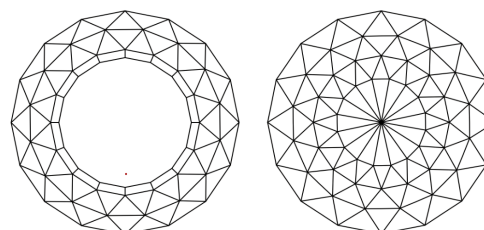
Comments: This Laboratory Grown Diamond was created by Chemical Vapor Deposition (CVD) growth process.
Type IIa

PROPORTIONS



Sample Image Used

CLARITY CHARACTERISTICS



KEY TO SYMBOLS

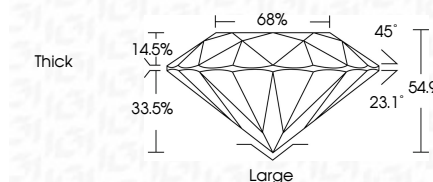
Red symbols indicate internal characteristics.
Green symbols indicate external characteristics.

COLOR

D E F G H I J Faint Very Light Light

CLARITY

FL	IF	VVS ¹⁻²	VS ¹⁻²	SI ¹⁻²	I ¹⁻³
Flawless	Internally Flawless	Very Very Slightly Included	Very Slightly Included	Slightly Included	Included



ADDITIONAL GRADING INFORMATION

Polish **VERY GOOD**
Symmetry **VERY GOOD**
Fluorescence **NONE**
Inscription(s) **(IGI) LG734539561**
Comments: This Laboratory Grown Diamond was created by Chemical Vapor Deposition (CVD) growth process.
Type IIa



October 17, 2025
IGI Report No LG734539561
ROUND MIXED CUT
6.57 - 6.63 X 3.64 MM
1.38 CARAT
Color Grade **G**
Depth **54.9%**
Table **14.5%**
Girdle **None**
Culet **None**
Polish **VERY GOOD**
Symmetry **VERY GOOD**
Fluorescence **NONE**
Inscription(s) **(IGI) LG734539561**
Comments: This Laboratory Grown Diamond was created by Chemical Vapor Deposition (CVD) growth process.
Type IIa