



ELECTRONIC COPY

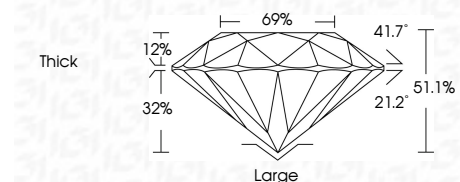
LG734539560
Report verification at igi.org



October 17, 2025
IGI Report Number **LG734539560**
Description **LABORATORY GROWN DIAMOND**
Shape and Cutting Style **ROUND MIXED CUT**
Measurements **6.33 - 6.34 X 3.24 MM**

GRADING RESULTS

Carat Weight **1.13 CARAT**
Color Grade **F**
Clarity Grade **VVS 2**

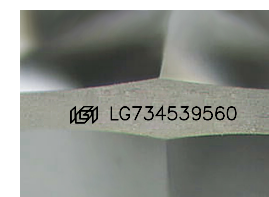


ADDITIONAL GRADING INFORMATION

Polish **VERY GOOD**
Symmetry **VERY GOOD**
Fluorescence **NONE**
Inscription(s) **IGI LG734539560**
Comments: This Laboratory Grown Diamond was created by Chemical Vapor Deposition (CVD) growth process. Type IIa

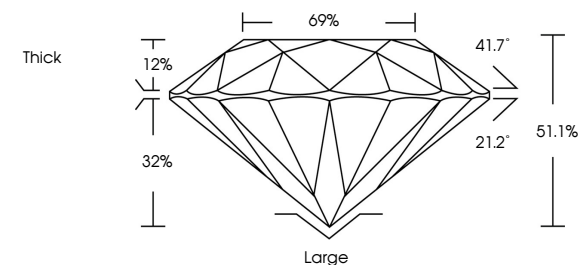


October 17, 2025
IGI Report No LG734539560
ROUND MIXED CUT
1.13 CARAT **F**
Carat Weight **VVS 2**
Color Grade **6.33 - 6.34 X 3.24 MM**
Depth **51.1%**
Table **12%**
Girdle **21.2%**
Culet **Thick**
Polish **Large**
Symmetry **VERY GOOD**
Fluorescence **NONE**
Inscription(s) **IGI LG734539560**
Comments: This Laboratory Grown Diamond was created by Chemical Vapor Deposition (CVD) growth process. Type IIa

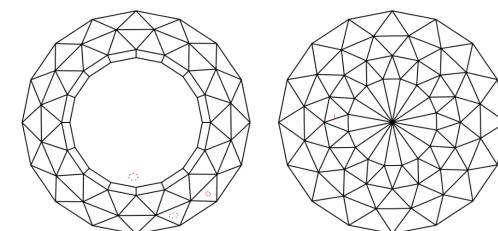


Sample Image Used

PROPORTIONS



CLARITY CHARACTERISTICS



KEY TO SYMBOLS

Red symbols indicate internal characteristics.
Green symbols indicate external characteristics.

COLOR

D E F G H I J Faint Very Light Light

CLARITY

FL	IF	VVS ¹⁻²	VS ¹⁻²	SI ¹⁻²	I ¹⁻³
Flawless	Internally Flawless	Very Very Slightly Included	Very Slightly Included	Slightly Included	Included

