



ELECTRONIC COPY

LG734535539
Report verification at igi.org



September 23, 2025

IGI Report Number **LG734535539**

Description **LABORATORY GROWN DIAMOND**

Shape and Cutting Style **CUT CORNERED
RECTANGULAR MODIFIED
BRILLIANT**

Measurements **10.49 X 7.04 X 4.69 MM**

GRADING RESULTS

Carat Weight **3.01 CARATS**

Color Grade **FANCY VIVID BLUE**

Clarity Grade **VS 2**

LABORATORY GROWN DIAMOND REPORT

September 23, 2025

IGI Report Number **LG734535539**

Description **LABORATORY GROWN DIAMOND**

Shape and Cutting Style **CUT CORNERED RECTANGULAR
MODIFIED BRILLIANT**

Measurements **10.49 X 7.04 X 4.69 MM**

GRADING RESULTS

Carat Weight **3.01 CARATS**

Color Grade **FANCY VIVID BLUE**

Clarity Grade **VS 2**

ADDITIONAL GRADING INFORMATION

Polish **EXCELLENT**

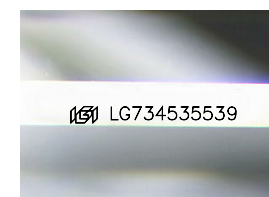
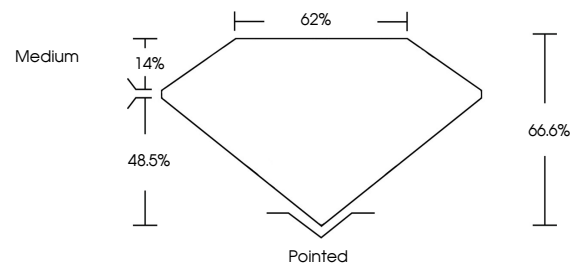
Symmetry **EXCELLENT**

Fluorescence **NONE**

Inscription(s) **IGI LG734535539**

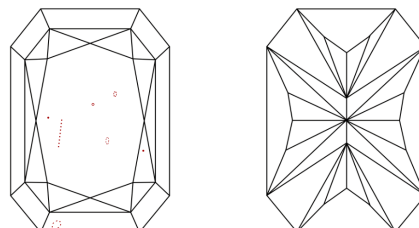
Comments: This Laboratory Grown Diamond was created by Chemical Vapor Deposition (CVD) growth process. Indications of post-growth treatment.

PROPORTIONS



Sample Image Used

CLARITY CHARACTERISTICS



KEY TO SYMBOLS

Red symbols indicate internal characteristics.
Green symbols indicate external characteristics.

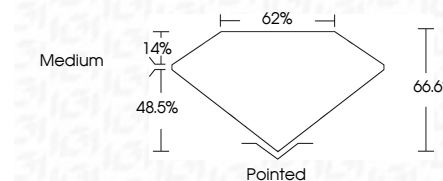
COLOR

D E F G H I J Faint Very Light Light

CLARITY

IF VS¹⁻² VS¹⁻² SI¹⁻² I¹⁻³

Internally Flawless Very Very Slightly Included Very Slightly Included Slightly Included Included



ADDITIONAL GRADING INFORMATION

Polish **EXCELLENT**

Symmetry **EXCELLENT**

Fluorescence **NONE**

Inscription(s) **IGI LG734535539**

Comments: This Laboratory Grown Diamond was created by Chemical Vapor Deposition (CVD) growth process. Indications of post-growth treatment.



September 23, 2025
IGI Report No LG734535539
CUT CORNERED RECT. MODIFIED BRILLIANT
3.01 CARATS
FANCY VIVID BLUE
VS 2
66.6%
62%
Medium
Pointed
EXCELLENT
EXCELLENT
NONE
IGI LG734535539
Comments: This Laboratory Grown Diamond was created by Chemical Vapor Deposition (CVD) growth process. Indications of post-growth treatment.