



# INTERNATIONAL GEMOLOGICAL INSTITUTE

ELECTRONIC COPY

## LABORATORY GROWN DIAMOND REPORT

September 22, 2025

IGI Report Number

LG734532659

Description

LABORATORY GROWN DIAMOND

Shape and Cutting Style

OVAL BRILLIANT

Measurements

6.05 X 4.51 X 2.84 MM

### GRADING RESULTS

Carat Weight

0.49 CARAT

Color Grade

E

Clarity Grade

VVS 2

### ADDITIONAL GRADING INFORMATION

Polish

VERY GOOD

Symmetry

GOOD

Fluorescence

NONE

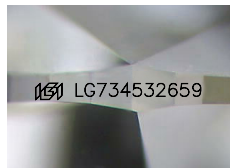
Inscription(s)

IGI LG734532659

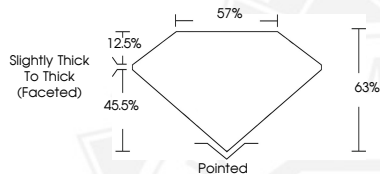
Comments: As Grown - No indication of post-growth treatment.

This Laboratory Grown Diamond was created by High Pressure High Temperature (HPHT) growth process.

Type II



Sample Image Used



September 22, 2025

IGI Report Number LG734532659

OVAL BRILLIANT

LABORATORY GROWN DIAMOND

6.05 X 4.51 X 2.84 MM

Carat Weight 0.49 CARAT

Color Grade E

Clarity Grade VVS 2

Polish VERY GOOD

Symmetry GOOD

Fluorescence NONE

Inscription(s) IGI LG734532659

Comments: As Grown - No indication of post-growth treatment. This Laboratory Grown Diamond was created by High Pressure High Temperature (HPHT) growth process. Type II



September 22, 2025

IGI Report Number LG734532659

OVAL BRILLIANT

LABORATORY GROWN DIAMOND

6.05 X 4.51 X 2.84 MM

Carat Weight 0.49 CARAT

Color Grade E

Clarity Grade VVS 2

Polish VERY GOOD

Symmetry GOOD

Fluorescence NONE

Inscription(s) IGI LG734532659

Comments: As Grown - No indication of post-growth treatment. This Laboratory Grown Diamond was created by High Pressure High Temperature (HPHT) growth process. Type II



THIS DOCUMENT WAS PRODUCED WITH THE FOLLOWING SECURITY MEASURES: SPECIAL DOCUMENT PAPER, INK SCREENS, WATERMARK, BACKGROUND DESIGNS, HOLOGRAM AND OTHER SECURITY FEATURES NOT LISTED AND DO EXCEED DOCUMENT SECURITY INDUSTRY GUIDELINES.

For terms & conditions and to verify this report, please visit [www.igi.org](http://www.igi.org)