



**ELECTRONIC COPY**

LG734521226  
Report verification at igi.org



September 18, 2025

IGI Report Number **LG734521226**

Description **LABORATORY GROWN DIAMOND**

Shape and Cutting Style **EMERALD CUT**

Measurements **15.10 X 10.11 X 7.05 MM**

**GRADING RESULTS**

Carat Weight **11.02 CARATS**

Color Grade **F**

Clarity Grade **VVS 2**

September 18, 2025  
IGI Report Number **LG734521226**  
Description **LABORATORY GROWN DIAMOND**  
Shape and Cutting Style **EMERALD CUT**  
Measurements **15.10 X 10.11 X 7.05 MM**

**GRADING RESULTS**

Carat Weight **11.02 CARATS**

Color Grade **F**

Clarity Grade **VVS 2**

**ADDITIONAL GRADING INFORMATION**

Polish **EXCELLENT**

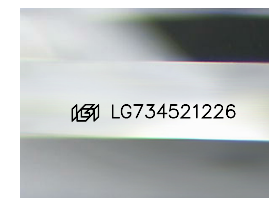
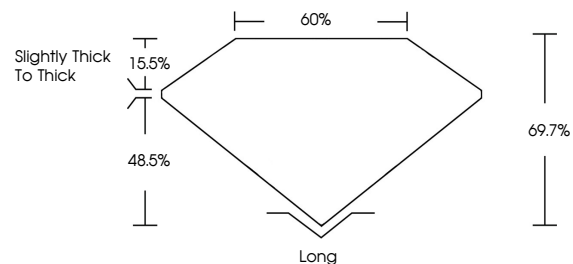
Symmetry **EXCELLENT**

Fluorescence **NONE**

Inscription(s) **IGI LG734521226**

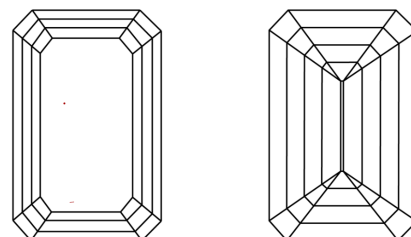
Comments: This Laboratory Grown Diamond was created by Chemical Vapor Deposition (CVD) growth process. Type IIa

**PROPORTIONS**



Sample Image Used

**CLARITY CHARACTERISTICS**



**KEY TO SYMBOLS**

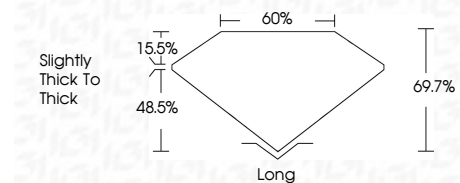
Red symbols indicate internal characteristics.  
Green symbols indicate external characteristics.

**COLOR**

D E F G H I J Faint Very Light Light

**CLARITY**

IF	VS <sup>1-2</sup>	VVS <sup>1-2</sup>	S <sup>1-2</sup>	I <sup>1-3</sup>
Internally Flawless	Very Very Slightly Included	Very Slightly Included	Slightly Included	Included



**ADDITIONAL GRADING INFORMATION**

Polish **EXCELLENT**

Symmetry **EXCELLENT**

Fluorescence **NONE**

Inscription(s) **IGI LG734521226**

Comments: This Laboratory Grown Diamond was created by Chemical Vapor Deposition (CVD) growth process. Type IIa



**IGI**



September 18, 2025  
IGI Report No LG734521226  
**EMERALD CUT**

**15.10 X 10.11 X 7.05 MM**

Carat Weight **11.02 CARATS**  
Color Grade **F**  
Clarity Grade **VVS 2**  
Depth **69.7%**  
Table **60%**  
Girdle **Slightly thick to thick**

Culet **Long**  
Polish **EXCELLENT**  
Symmetry **EXCELLENT**  
Fluorescence **NONE**  
Inscription(s) **IGI LG734521226**

Comments: This Laboratory Grown Diamond was created by Chemical Vapor Deposition (CVD) growth process. Type IIa