



ELECTRONIC COPY

LG734521004
Report verification at igi.org



September 16, 2025
IGI Report Number **LG734521004**
Description **LABORATORY GROWN DIAMOND**
Shape and Cutting Style **RECTANGULAR CUSHION MIXED CUT**
Measurements **12.06 X 8.35 X 5.56 MM**
GRADING RESULTS
Carat Weight **5.07 CARATS**
Color Grade **D**
Clarity Grade **VVS 2**

LABORATORY GROWN DIAMOND REPORT

September 16, 2025
IGI Report Number **LG734521004**
Description **LABORATORY GROWN DIAMOND**
Shape and Cutting Style **RECTANGULAR CUSHION MIXED CUT**
Measurements **12.06 X 8.35 X 5.56 MM**

GRADING RESULTS

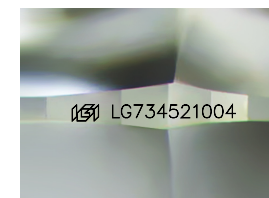
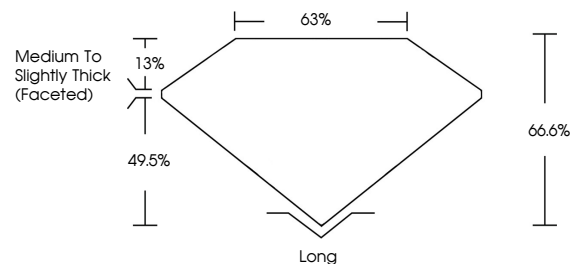
Carat Weight **5.07 CARATS**
Color Grade **D**
Clarity Grade **VVS 2**

ADDITIONAL GRADING INFORMATION

Polish **EXCELLENT**
Symmetry **EXCELLENT**
Fluorescence **NONE**
Inscription(s) **IGI LG734521004**

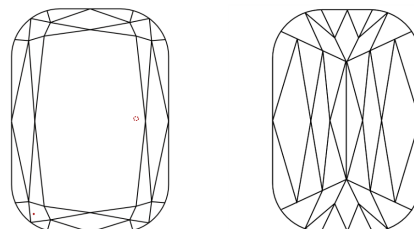
Comments: This Laboratory Grown Diamond was created by Chemical Vapor Deposition (CVD) growth process.
Type IIa

PROPORTIONS



Sample Image Used

CLARITY CHARACTERISTICS



KEY TO SYMBOLS

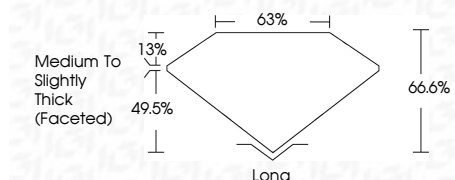
Red symbols indicate internal characteristics.
Green symbols indicate external characteristics.

COLOR

D E F G H I J Faint Very Light Light

CLARITY

IF	VS ¹⁻²	VS ¹⁻²	SI ¹⁻²	I ¹⁻³
Internally Flawless	Very Very Slightly Included	Very Slightly Included	Slightly Included	Included



ADDITIONAL GRADING INFORMATION

Polish **EXCELLENT**
Symmetry **EXCELLENT**
Fluorescence **NONE**
Inscription(s) **IGI LG734521004**
Comments: This Laboratory Grown Diamond was created by Chemical Vapor Deposition (CVD) growth process.
Type IIa



September 16, 2025
IGI Report No LG734521004
RECTANGULAR CUSHION MIXED CUT
5.07 CARATS
D
5.07 CARATS
D
12.06 X 8.35 X 5.56 MM
VVS 2
66.6%
63%
Medium to Slightly Thick (Faceted)
Long
EXCELLENT
EXCELLENT
NONE
IGI LG734521004
Comments: This Laboratory Grown Diamond was created by Chemical Vapor Deposition (CVD) growth process.
Type IIa