



ELECTRONIC COPY

LG734520838
Report verification at igi.org



September 16, 2025
IGI Report Number **LG734520838**
Description **LABORATORY GROWN DIAMOND**
Shape and Cutting Style **CUT CORNERED
RECTANGULAR MODIFIED
BRILLIANT**
Measurements **15.85 X 11.58 X 7.68 MM**
GRADING RESULTS
Carat Weight **14.01 CARATS**
Color Grade **E**
Clarity Grade **VS 1**

September 16, 2025
IGI Report Number **LG734520838**
Description **LABORATORY GROWN DIAMOND**
Shape and Cutting Style **CUT CORNERED RECTANGULAR
MODIFIED BRILLIANT**
Measurements **15.85 X 11.58 X 7.68 MM**

GRADING RESULTS

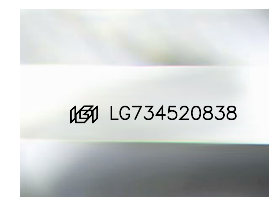
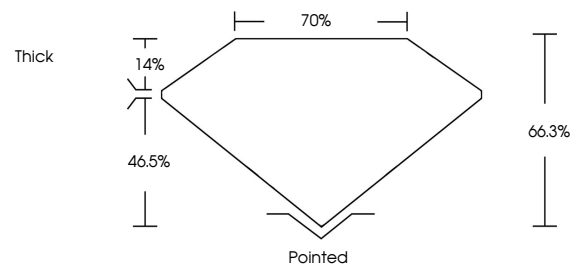
Carat Weight **14.01 CARATS**
Color Grade **E**
Clarity Grade **VS 1**

ADDITIONAL GRADING INFORMATION

Polish **EXCELLENT**
Symmetry **EXCELLENT**
Fluorescence **NONE**
Inscription(s) **IGI LG734520838**

Comments: This Laboratory Grown Diamond was created by Chemical Vapor Deposition (CVD) growth process.
Type IIa

PROPORTIONS



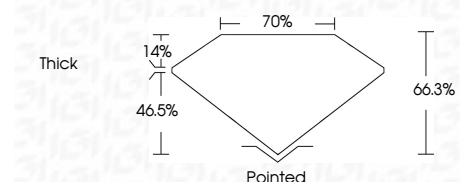
Sample Image Used

COLOR

D E F G H I J Faint Very Light Light

CLARITY

IF	VS ¹⁻²	VS ¹⁻²	SI ¹⁻²	I ¹⁻³
Internally Flawless	Very Very Slightly Included	Very Slightly Included	Slightly Included	Included



ADDITIONAL GRADING INFORMATION

Polish **EXCELLENT**
Symmetry **EXCELLENT**
Fluorescence **NONE**
Inscription(s) **IGI LG734520838**
Comments: This Laboratory Grown Diamond was created by Chemical Vapor Deposition (CVD) growth process.
Type IIa



September 16, 2025
IGI Report No LG734520838
CUT CORNERED RECT. MODIFIED BRILLIANT
15.85 X 11.58 X 7.68 MM
14.01 CARATS
E
VS 1
66.3%
70%
Thick
Pointed
EXCELLENT
EXCELLENT
NONE
IGI LG734520838
Comments: This Laboratory Grown Diamond was created by Chemical Vapor Deposition (CVD) growth process.
Type IIa