



**INTERNATIONAL
GEMOLOGICAL
INSTITUTE**

LABORATORY GROWN DIAMOND REPORT

September 23, 2025

IGI Report Number **LG734516864**

Description **LABORATORY GROWN DIAMOND**

Shape and Cutting Style **ROUND BRILLIANT**

Measurements **3.60 - 3.65 X 2.21 MM**

GRADING RESULTS

Carat Weight **0.17 CARAT**

Color Grade **FANCY INTENSE PINK**

Clarity Grade **VS 1**

Cut Grade **GOOD**

ADDITIONAL GRADING INFORMATION

Polish **VERY GOOD**

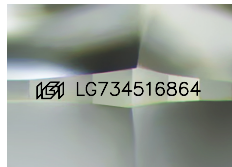
Symmetry **FAIR**

Fluorescence **SLIGHT**

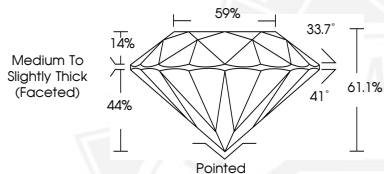
Inscription(s) **IGI LG734516864**

Comments: This Laboratory Grown Diamond was created by High Pressure High Temperature (HPHT) growth process. Indications of post-growth treatment.

ELECTRONIC COPY



Sample Image Used



September 23, 2025

IGI Report Number **LG734516864**

ROUND BRILLIANT

LABORATORY GROWN DIAMOND

3.60 - 3.65 X 2.21 MM

Carat Weight **0.17 CARAT**

Color Grade **FANCY INTENSE PINK**

Clarity Grade **VS 1**

Cut Grade **GOOD**

Polish **VERY GOOD**

Symmetry **FAIR**

Fluorescence **SLIGHT**

Inscription(s) **IGI LG734516864**

Comments: This Laboratory Grown Diamond was created by High Pressure High Temperature (HPHT) growth process. Indications of post-growth treatment.



September 23, 2025

IGI Report Number **LG734516864**

ROUND BRILLIANT

LABORATORY GROWN DIAMOND

3.60 - 3.65 X 2.21 MM

Carat Weight **0.17 CARAT**

Color Grade **FANCY INTENSE PINK**

Clarity Grade **VS 1**

Cut Grade **GOOD**

Polish **VERY GOOD**

Symmetry **FAIR**

Fluorescence **SLIGHT**

Inscription(s) **IGI LG734516864**

Comments: This Laboratory Grown Diamond was created by High Pressure High Temperature (HPHT) growth process. Indications of post-growth treatment.



THIS DOCUMENT WAS PRODUCED WITH THE FOLLOWING SECURITY MEASURES: SPECIAL DOCUMENT PAPER, INK SCREENS, WATERMARK, BACKGROUND DESIGNS, HOLOGRAM AND OTHER SECURITY FEATURES NOT LISTED AND DO EXCEED DOCUMENT SECURITY INDUSTRY GUIDELINES.

For terms & conditions and to verify this report, please visit www.igi.org