



**INTERNATIONAL
GEMOLOGICAL
INSTITUTE**

ELECTRONIC COPY



October 17, 2025

IGI Report Number **LG734516850**

ROUND BRILLIANT

LABORATORY GROWN DIAMOND

3.47 - 3.54 X 2.07 MM

Carat Weight **0.15 CARAT**

Color Grade **FANCY VIVID BLUE**

Clarity Grade **VS 1**

Cut Grade **VERY GOOD**

Polish **VERY GOOD**

Symmetry **GOOD**

Fluorescence **NONE**

Inscription(s) **IGI LG734516850**

Comments: This Laboratory Grown Diamond was created by High Pressure High Temperature (HPHT) growth process. Indications of post-growth treatment.

LABORATORY GROWN DIAMOND REPORT

October 17, 2025

IGI Report Number

LG734516850

Description

LABORATORY GROWN DIAMOND

Shape and Cutting Style

ROUND BRILLIANT

Measurements

3.47 - 3.54 X 2.07 MM

GRADING RESULTS

Carat Weight

0.15 CARAT

Color Grade

FANCY VIVID BLUE

Clarity Grade

VS 1

Cut Grade

VERY GOOD

ADDITIONAL GRADING INFORMATION

Polish

VERY GOOD

Symmetry

GOOD

Fluorescence

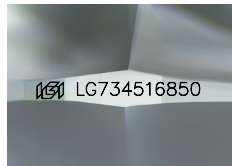
NONE

Inscription(s)

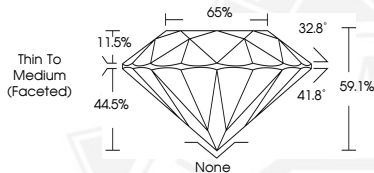
IGI LG734516850

Comments: This Laboratory Grown Diamond was created by High Pressure High Temperature (HPHT) growth process.

Indications of post-growth treatment.



Sample Image Used



October 17, 2025

IGI Report Number **LG734516850**

ROUND BRILLIANT

LABORATORY GROWN DIAMOND

3.47 - 3.54 X 2.07 MM

Carat Weight **0.15 CARAT**

Color Grade **FANCY VIVID BLUE**

Clarity Grade **VS 1**

Cut Grade **VERY GOOD**

Polish **VERY GOOD**

Symmetry **GOOD**

Fluorescence **NONE**

Inscription(s) **IGI LG734516850**

Comments: This Laboratory Grown Diamond was created by High Pressure High Temperature (HPHT) growth process. Indications of post-growth treatment.



THIS DOCUMENT WAS PRODUCED WITH THE FOLLOWING SECURITY MEASURES: SPECIAL DOCUMENT PAPER, INK SCREENS, WATERMARK, BACKGROUND DESIGNS, HOLOGRAM AND OTHER SECURITY FEATURES NOT LISTED AND DO EXCEED DOCUMENT SECURITY INDUSTRY GUIDELINES.

For terms & conditions and to verify this report, please visit www.igi.org