



LABORATORY GROWN DIAMOND REPORT

September 13, 2025
 IGI Report Number **LG734516715**
 Description **LABORATORY GROWN DIAMOND**
 Shape and Cutting Style **HEXAGONAL MODIFIED STEP CUT**
 Measurements **7.74 X 4.49 X 2.71 MM**

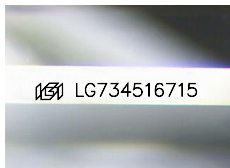
GRADING RESULTS

Carat Weight **0.68 CARAT**
 Color Grade **E**
 Clarity Grade **VVS 2**

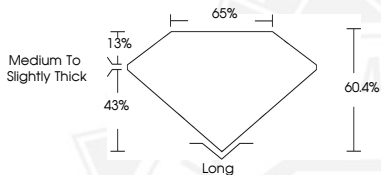
ADDITIONAL GRADING INFORMATION

Polish **EXCELLENT**
 Symmetry **EXCELLENT**
 Fluorescence **NONE**
 Inscription(s) **IGI LG734516715**

Comments: This Laboratory Grown Diamond was created by
 Chemical Vapor Deposition (CVD) growth process.
 Type IIa



Sample Image Used



September 13, 2025

IGI Report Number LG734516715
HEXAGONAL MODIFIED STEP CUT
LABORATORY GROWN DIAMOND
7.74 X 4.49 X 2.71 MM

Carat Weight **0.68 CARAT**
 Color Grade **E**
 Clarity Grade **VVS 2**
 Polish **EXCELLENT**
 Symmetry **EXCELLENT**
 Fluorescence **NONE**
 Inscription(s) **IGI LG734516715**

Comments: This Laboratory Grown
 Diamond was created by
 Chemical Vapor Deposition (CVD)
 growth process. Type IIa



September 13, 2025

IGI Report Number LG734516715
HEXAGONAL MODIFIED STEP CUT
LABORATORY GROWN DIAMOND
7.74 X 4.49 X 2.71 MM

Carat Weight **0.68 CARAT**
 Color Grade **E**
 Clarity Grade **VVS 2**
 Polish **EXCELLENT**
 Symmetry **EXCELLENT**
 Fluorescence **NONE**
 Inscription(s) **IGI LG734516715**

Comments: This Laboratory Grown
 Diamond was created by
 Chemical Vapor Deposition (CVD)
 growth process. Type IIa



THIS DOCUMENT WAS PRODUCED WITH THE FOLLOWING SECURITY MEASURES: SPECIAL DOCUMENT PAPER, INK SCREENS, WATERMARK, BACKGROUND DESIGNS, HOLOGRAM AND OTHER SECURITY FEATURES NOT LISTED AND DO EXCEED DOCUMENT SECURITY INDUSTRY GUIDELINES.