



LABORATORY GROWN DIAMOND REPORT

September 15, 2025
 IGI Report Number **LG734515499**
 Description **LABORATORY GROWN DIAMOND**
 Shape and Cutting Style **PENTAGON MODIFIED BRILLIANT**
 Measurements **8.54 X 3.88 X 2.08 MM**

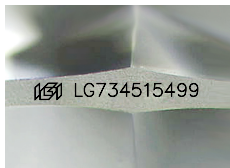
GRADING RESULTS

Carat Weight **0.52 CARAT**
 Color Grade **E**
 Clarity Grade **VS 2**

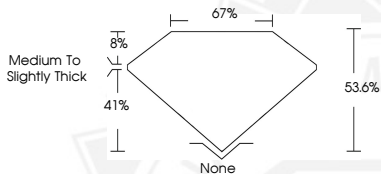
ADDITIONAL GRADING INFORMATION

Polish **VERY GOOD**
 Symmetry **VERY GOOD**
 Fluorescence **NONE**
 Inscription(s) **IGI LG734515499**

Comments: This Laboratory Grown Diamond was created by
 Chemical Vapor Deposition (CVD) growth process.
 Type IIa



Sample Image Used



September 15, 2025

IGI Report Number **LG734515499**
PENTAGON MODIFIED BRILLIANT
LABORATORY GROWN DIAMOND
8.54 X 3.88 X 2.08 MM

Carat Weight **0.52 CARAT**
 Color Grade **E**
 Clarity Grade **VS 2**
 Polish **VERY GOOD**
 Symmetry **VERY GOOD**
 Fluorescence **NONE**
 Inscription(s) **IGI LG734515499**

Comments: This Laboratory Grown
 Diamond was created by
 Chemical Vapor Deposition (CVD)
 growth process. Type IIa



September 15, 2025

IGI Report Number **LG734515499**
PENTAGON MODIFIED BRILLIANT
LABORATORY GROWN DIAMOND
8.54 X 3.88 X 2.08 MM

Carat Weight **0.52 CARAT**
 Color Grade **E**
 Clarity Grade **VS 2**
 Polish **VERY GOOD**
 Symmetry **VERY GOOD**
 Fluorescence **NONE**
 Inscription(s) **IGI LG734515499**

Comments: This Laboratory Grown
 Diamond was created by
 Chemical Vapor Deposition (CVD)
 growth process. Type IIa



THIS DOCUMENT WAS PRODUCED WITH THE FOLLOWING SECURITY MEASURES: SPECIAL DOCUMENT PAPER, INK SCREENS, WATERMARK, BACKGROUND DESIGNS, HOLOGRAM AND OTHER SECURITY FEATURES NOT LISTED AND DO EXCEED DOCUMENT SECURITY INDUSTRY GUIDELINES.