



INTERNATIONAL GEMOLOGICAL INSTITUTE

LABORATORY GROWN DIAMOND REPORT

September 19, 2025

IGI Report Number

LG734514752

Description

LABORATORY GROWN DIAMOND

Shape and Cutting Style

ROUND BRILLIANT

Measurements

5.54 - 5.56 X 3.39 MM

GRADING RESULTS

Carat Weight

0.63 CARAT

Color Grade

F

Clarity Grade

VVS 2

Cut Grade

IDEAL

ADDITIONAL GRADING INFORMATION

Polish

EXCELLENT

Symmetry

EXCELLENT

Fluorescence

NONE

Inscription(s)

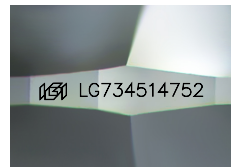
IGI LG734514752

Comments: HEARTS & ARROWS

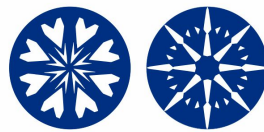
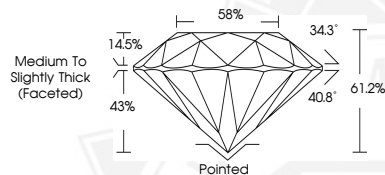
This Laboratory Grown Diamond was created by Chemical Vapor Deposition (CVD) growth process.

Type Ila

ELECTRONIC COPY



Sample Image Used



HEARTS & ARROWS



September 19, 2025

IGI Report Number LG734514752

ROUND BRILLIANT

LABORATORY GROWN DIAMOND

5.54 - 5.56 X 3.39 MM

Carat Weight 0.63 CARAT

Color Grade F

Clarity Grade VVS 2

Cut Grade IDEAL

Polish EXCELLENT

Symmetry EXCELLENT

Fluorescence NONE

Inscription(s) IGI LG734514752

Comments: HEARTS & ARROWS This Laboratory Grown Diamond was created by Chemical Vapor Deposition (CVD) growth process. Type Ila



September 19, 2025

IGI Report Number LG734514752

ROUND BRILLIANT

LABORATORY GROWN DIAMOND

5.54 - 5.56 X 3.39 MM

Carat Weight 0.63 CARAT

Color Grade F

Clarity Grade VVS 2

Cut Grade IDEAL

Polish EXCELLENT

Symmetry EXCELLENT

Fluorescence NONE

Inscription(s) IGI LG734514752

Comments: HEARTS & ARROWS This Laboratory Grown Diamond was created by Chemical Vapor Deposition (CVD) growth process. Type Ila



THIS DOCUMENT WAS PRODUCED WITH THE FOLLOWING SECURITY MEASURES: SPECIAL DOCUMENT PAPER, INK SCREENS, WATERMARK, BACKGROUND DESIGNS, HOLOGRAM AND OTHER SECURITY FEATURES NOT LISTED AND DO EXCEED DOCUMENT SECURITY INDUSTRY GUIDELINES.

For terms & conditions and to verify this report, please visit www.igi.org