



**ELECTRONIC COPY**

LG733598286  
Report verification at igi.org



September 26, 2025

IGI Report Number **LG733598286**

Description **LABORATORY GROWN DIAMOND**

Shape and Cutting Style **MARQUISE BRILLIANT**

Measurements **14.98 X 7.54 X 4.99 MM**

**GRADING RESULTS**

Carat Weight **3.51 CARATS**

Color Grade **G**

Clarity Grade **VVS 2**

September 26, 2025  
IGI Report Number **LG733598286**  
Description **LABORATORY GROWN DIAMOND**  
Shape and Cutting Style **MARQUISE BRILLIANT**  
Measurements **14.98 X 7.54 X 4.99 MM**

**GRADING RESULTS**

Carat Weight **3.51 CARATS**

Color Grade **G**

Clarity Grade **VVS 2**

**ADDITIONAL GRADING INFORMATION**

Polish **EXCELLENT**

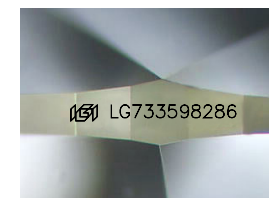
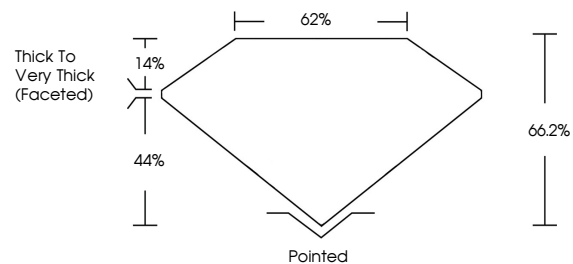
Symmetry **EXCELLENT**

Fluorescence **NONE**

Inscription(s) **IGI LG733598286**

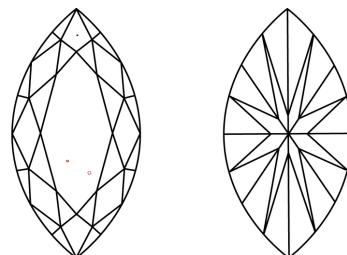
Comments: This Laboratory Grown Diamond was created by Chemical Vapor Deposition (CVD) growth process.  
Type IIa

**PROPORTIONS**



Sample Image Used

**CLARITY CHARACTERISTICS**



**KEY TO SYMBOLS**

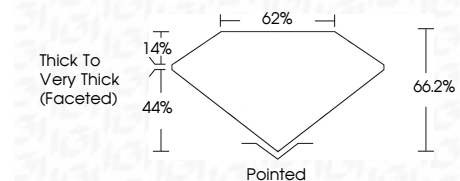
Red symbols indicate internal characteristics.  
Green symbols indicate external characteristics.

**COLOR**

D E F G H I J Faint Very Light Light

**CLARITY**

FL	IF	VVS <sup>1-2</sup>	VS <sup>1-2</sup>	SI <sup>1-2</sup>	I <sup>1-3</sup>
Flawless	Internally Flawless	Very Very Slightly Included	Very Slightly Included	Slightly Included	Included



**ADDITIONAL GRADING INFORMATION**

Polish **EXCELLENT**

Symmetry **EXCELLENT**

Fluorescence **NONE**

Inscription(s) **IGI LG733598286**

Comments: This Laboratory Grown Diamond was created by Chemical Vapor Deposition (CVD) growth process.  
Type IIa



**IGI**



September 26, 2025  
IGI Report No LG733598286  
MARQUISE BRILLIANT

3.51 CARATS  
G

14.98 X 7.54 X 4.99 MM

Carat Weight  
Color Grade  
Clarity Grade  
Depth  
Table  
Girdle

VVS 2  
G  
VVS 2  
66.2%  
62%

Thick to Very Thick (Faceted)

Pointed  
EXCELLENT  
EXCELLENT  
NONE  
NONE

Culet  
Polish  
Symmetry  
Fluorescence  
Inscription(s)

IGI LG733598286

Comments: This Laboratory Grown Diamond was created by Chemical Vapor Deposition (CVD) growth process.  
Type IIa