



ELECTRONIC COPY

LABORATORY GROWN DIAMOND REPORT

September 17, 2025
IGI Report Number LG733595894
Description LABORATORY GROWN DIAMOND
Shape and Cutting Style RECTANGULAR CUSHION BRILLIANT
Measurements 9.94 X 6.23 X 3.81 MM

GRADING RESULTS

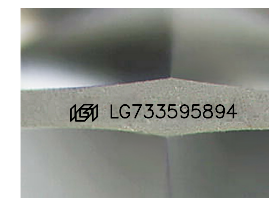
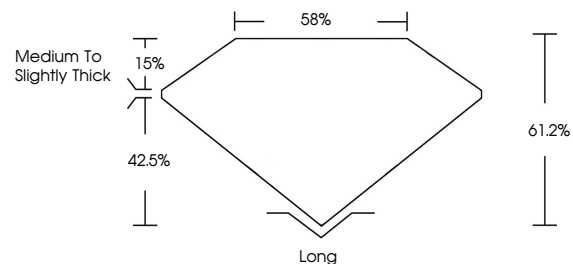
Carat Weight 1.96 CARAT
Color Grade F
Clarity Grade VS 1

ADDITIONAL GRADING INFORMATION

Polish EXCELLENT
Symmetry EXCELLENT
Fluorescence NONE
Inscription(s) LG733595894

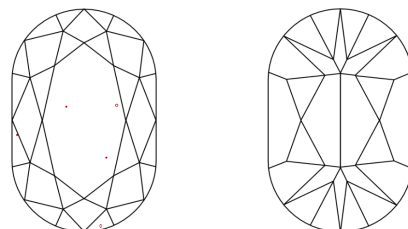
Comments: This Laboratory Grown Diamond was created by Chemical Vapor Deposition (CVD) growth process.
Type IIa

PROPORTIONS



Sample Image Used

CLARITY CHARACTERISTICS



KEY TO SYMBOLS

Red symbols indicate internal characteristics.
Green symbols indicate external characteristics.

COLOR

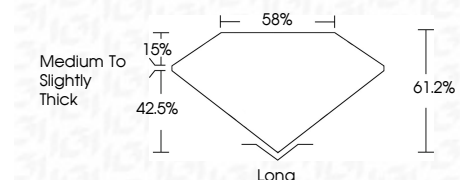
D E F G H I J Faint Very Light Light

CLARITY

IF WS¹⁻² VS¹⁻² SI¹⁻² I¹⁻³
Internally Flawless Very Very Slightly Included Very Slightly Included Slightly Included Included



September 17, 2025
IGI Report Number LG733595894
Description LABORATORY GROWN DIAMOND
Shape and Cutting Style RECTANGULAR CUSHION BRILLIANT
Measurements 9.94 X 6.23 X 3.81 MM
GRADING RESULTS
Carat Weight 1.96 CARAT
Color Grade F
Clarity Grade VS 1



ADDITIONAL GRADING INFORMATION

Polish EXCELLENT
Symmetry EXCELLENT
Fluorescence NONE
Inscription(s) LG733595894
Comments: This Laboratory Grown Diamond was created by Chemical Vapor Deposition (CVD) growth process.
Type IIa



September 17, 2025
IGI Report No LG733595894
RECTANGULAR CUSHION BRILLIANT
9.94 X 6.23 X 3.81 MM
1.96 CARAT F
Color Grade
Clarity Grade VS 1
Depth 61.2%
Table 58%
Girdle Medium to Slightly Thick
Culet Long
Polish EXCELLENT
Symmetry EXCELLENT
Fluorescence NONE
Inscription(s) LG733595894
Comments: This Laboratory Grown Diamond was created by Chemical Vapor Deposition (CVD) growth process.
Type IIa