

INTERNATIONAL  
GEMOLOGICAL  
INSTITUTE

ELECTRONIC COPY

LABORATORY GROWN DIAMOND REPORT

September 14, 2025

IGI Report Number  
Description  
Shape and Cutting Style  
Measurements

LG733595579  
LABORATORY GROWN DIAMOND  
ROUND BRILLIANT  
9.11 - 9.16 X 5.54 MM

GRADING RESULTS

Carat Weight  
Color Grade  
Clarity Grade  
Cut Grade

2.84 CARATS  
F  
VVS 2  
IDEAL

ADDITIONAL GRADING INFORMATION

Polish  
Symmetry  
Fluorescence  
Inscription(s)

EXCELLENT  
EXCELLENT  
NONE  
IGI LG733595579

Comments: This Laboratory Grown Diamond was created by Chemical Vapor Deposition (CVD) growth process.  
Type IIa

LABORATORY GROWN DIAMOND REPORT

September 14, 2025

IGI Report No LG733595579

ROUND BRILLIANT

9.11 - 9.16 X 5.54 MM

2.84 CARATS  
F  
VVS 2  
IDEAL  
59%  
60.7%

Medium To Slightly Thick (Faceted)

Pointed

EXCELLENT  
EXCELLENT  
NONE  
IGI LG733595579

Comments: The Laboratory Grown Diamond was created by Chemical Vapor Deposition (CVD) growth process.  
Type IIa

IGI

September 14, 2025

IGI Report No LG733595579

ROUND BRILLIANT

9.11 - 9.16 X 5.54 MM

2.84 CARATS  
F  
VVS 2  
IDEAL  
59%  
60.7%

Medium To Slightly Thick (Faceted)

Pointed

EXCELLENT  
EXCELLENT  
NONE  
IGI LG733595579

Comments: The Laboratory Grown Diamond was created by Chemical Vapor Deposition (CVD) growth process.  
Type IIa

IGI

September 14, 2025

IGI Report No LG733595579

ROUND BRILLIANT

9.11 - 9.16 X 5.54 MM

2.84 CARATS  
F  
VVS 2  
IDEAL  
59%  
60.7%

Medium To Slightly Thick (Faceted)

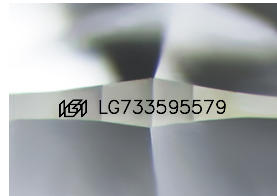
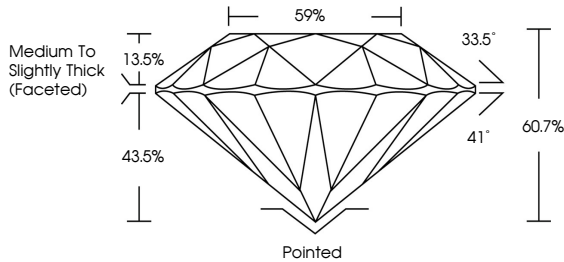
Pointed

EXCELLENT  
EXCELLENT  
NONE  
IGI LG733595579

Comments: The Laboratory Grown Diamond was created by Chemical Vapor Deposition (CVD) growth process.  
Type IIa

LG733595579  
Report verification at [igi.org](https://www.igi.org)

PROPORTIONS



Sample Image Used

COLOR

D	E	F	G	H	I	J	Faint	Very Light	Light
---	---	---	---	---	---	---	-------	------------	-------

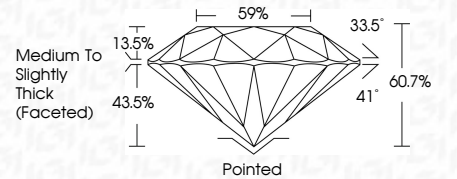
CLARITY

IF	VS <sup>1-2</sup>	VS <sup>1-2</sup>	SI <sup>1-2</sup>	I <sup>1-3</sup>
Internally Flawless	Very Very Slightly Included	Very Slightly Included	Slightly Included	Included



September 14, 2025  
IGI Report Number  
Description  
Shape and Cutting Style  
Measurements  
GRADING RESULTS  
Carat Weight  
Color Grade  
Clarity Grade  
Cut Grade

LG733595579  
LABORATORY GROWN DIAMOND  
ROUND BRILLIANT  
9.11 - 9.16 X 5.54 MM  
2.84 CARATS  
F  
VVS 2  
IDEAL



ADDITIONAL GRADING INFORMATION

Polish  
Symmetry  
Fluorescence  
Inscription(s)

EXCELLENT  
EXCELLENT  
NONE  
IGI LG733595579

Comments: This Laboratory Grown Diamond was created by Chemical Vapor Deposition (CVD) growth process.  
Type IIa



September 14, 2025

IGI Report No LG733595579

ROUND BRILLIANT

9.11 - 9.16 X 5.54 MM

2.84 CARATS  
F  
VVS 2  
IDEAL  
59%  
60.7%

Medium To Slightly Thick (Faceted)

Pointed

EXCELLENT  
EXCELLENT  
NONE  
IGI LG733595579

Comments: The Laboratory Grown Diamond was created by Chemical Vapor Deposition (CVD) growth process.  
Type IIa