



ELECTRONIC COPY

LG733591557
Report verification at igi.org



September 24, 2025
IGI Report Number **LG733591557**
Description **LABORATORY GROWN DIAMOND**
Shape and Cutting Style **CUT CORNERED
RECTANGULAR MODIFIED
BRILLIANT**
Measurements **7.69 X 5.05 X 3.08 MM**
GRADING RESULTS
Carat Weight **1.06 CARAT**
Color Grade **FANCY DEEP ORANGE**
Clarity Grade **VS 1**

LABORATORY GROWN DIAMOND REPORT

September 24, 2025
IGI Report Number **LG733591557**
Description **LABORATORY GROWN DIAMOND**
Shape and Cutting Style **CUT CORNERED RECTANGULAR
MODIFIED BRILLIANT**
Measurements **7.69 X 5.05 X 3.08 MM**

GRADING RESULTS

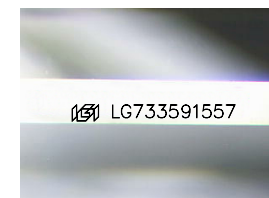
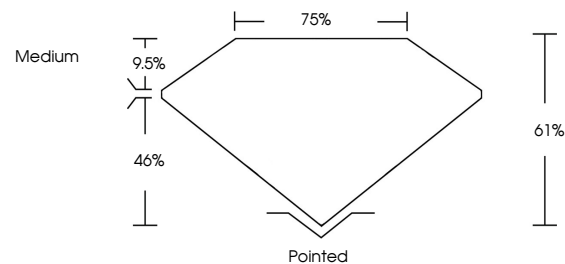
Carat Weight **1.06 CARAT**
Color Grade **FANCY DEEP ORANGE**
Clarity Grade **VS 1**

ADDITIONAL GRADING INFORMATION

Polish **EXCELLENT**
Symmetry **EXCELLENT**
Fluorescence **NONE**
Inscription(s) **IGI LG733591557**

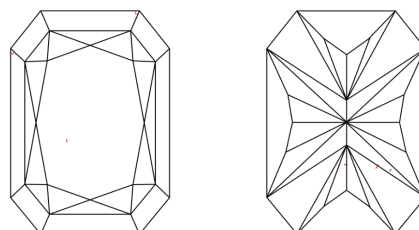
Comments: This Laboratory Grown Diamond was created by Chemical Vapor Deposition (CVD) growth process.
Indications of post-growth treatment.

PROPORTIONS



Sample Image Used

CLARITY CHARACTERISTICS



KEY TO SYMBOLS

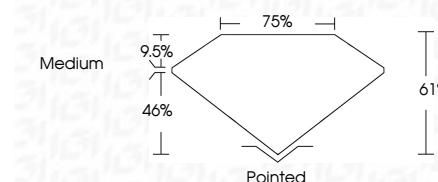
Red symbols indicate internal characteristics.
Green symbols indicate external characteristics.

COLOR

D E F G H I J Faint Very Light Light

CLARITY

IF	VS ¹⁻²	VS ¹⁻²	SI ¹⁻²	I ¹⁻³
Internally Flawless	Very Very Slightly Included	Very Slightly Included	Slightly Included	Included



ADDITIONAL GRADING INFORMATION

Polish **EXCELLENT**
Symmetry **EXCELLENT**
Fluorescence **NONE**
Inscription(s) **IGI LG733591557**
Comments: This Laboratory Grown Diamond was created by Chemical Vapor Deposition (CVD) growth process.
Indications of post-growth treatment.



September 24, 2025
IGI Report No LG733591557
CUT CORNERED RECT. MODIFIED BRILLIANT
7.69 X 5.05 X 3.08 MM
1.06 CARAT
FANCY DEEP ORANGE
VS 1
61%
75%
Medium
Pointed
EXCELLENT
EXCELLENT
NONE
IGI LG733591557
Comments: This Laboratory Grown Diamond was created by Chemical Vapor Deposition (CVD) growth process.
Indications of post-growth treatment.