



**ELECTRONIC COPY**

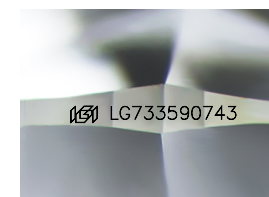
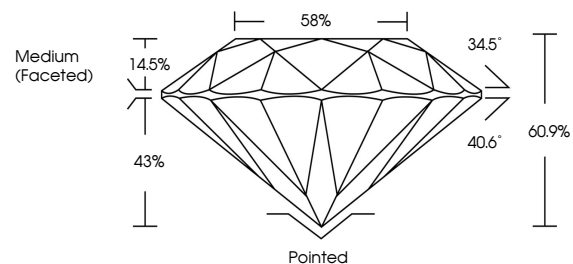
LG733590743  
Report verification at igi.org



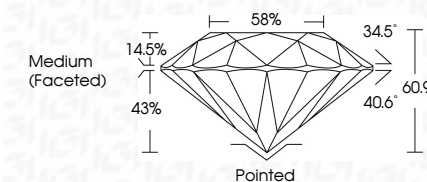
September 13, 2025  
IGI Report Number **LG733590743**  
Description **LABORATORY GROWN DIAMOND**  
Shape and Cutting Style **ROUND BRILLIANT**  
Measurements **9.24 - 9.32 X 5.65 MM**  
**GRADING RESULTS**  
Carat Weight **3.02 CARATS**  
Color Grade **G**  
Clarity Grade **VVS 2**  
Cut Grade **IDEAL**

September 13, 2025  
IGI Report Number **LG733590743**  
Description **LABORATORY GROWN DIAMOND**  
Shape and Cutting Style **ROUND BRILLIANT**  
Measurements **9.24 - 9.32 X 5.65 MM**  
**GRADING RESULTS**  
Carat Weight **3.02 CARATS**  
Color Grade **G**  
Clarity Grade **VVS 2**  
Cut Grade **IDEAL**

**PROPORTIONS**



Sample Image Used



**ADDITIONAL GRADING INFORMATION**  
Polish **EXCELLENT**  
Symmetry **EXCELLENT**  
Fluorescence **NONE**  
Inscription(s) **IGI LG733590743**  
Comments: This Laboratory Grown Diamond was created by Chemical Vapor Deposition (CVD) growth process. Type IIa

**COLOR**

D E F G H I J Faint Very Light Light

**CLARITY**

IF	VS <sup>1-2</sup>	VS <sup>1-2</sup>	SI <sup>1-2</sup>	I <sup>1-3</sup>
Internally Flawless	Very Very Slightly Included	Very Slightly Included	Slightly Included	Included

**ADDITIONAL GRADING INFORMATION**

Polish **EXCELLENT**  
Symmetry **EXCELLENT**  
Fluorescence **NONE**  
Inscription(s) **IGI LG733590743**  
Comments: This Laboratory Grown Diamond was created by Chemical Vapor Deposition (CVD) growth process. Type IIa



**IGI**



September 13, 2025  
IGI Report No LG733590743  
**ROUND BRILLIANT**  
9.24 - 9.32 X 5.65 MM  
3.02 CARATS  
G  
VVS 2  
IDEAL  
60.9%  
58%  
Medium (Faceted)  
Pointed  
EXCELLENT  
EXCELLENT  
NONE  
IGI LG733590743  
Comments: This Laboratory Grown Diamond was created by Chemical Vapor Deposition (CVD) growth process. Type IIa