

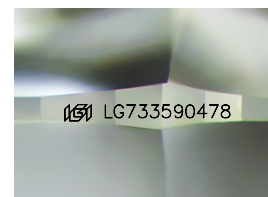
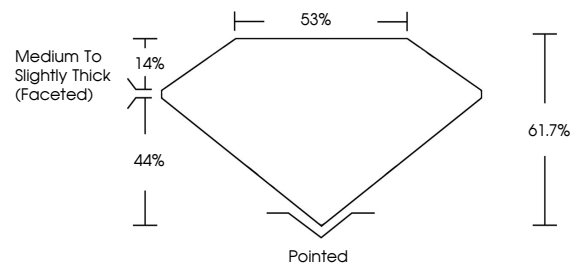


ELECTRONIC COPY

LABORATORY GROWN DIAMOND REPORT

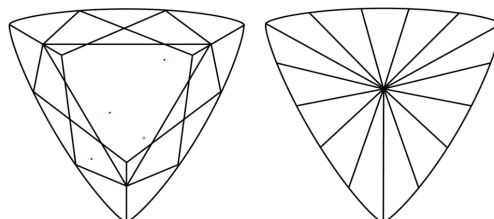
LG733590478
Report verification at igi.org

PROPORTIONS



Sample Image Used

CLARITY CHARACTERISTICS



KEY TO SYMBOLS

Red symbols indicate internal characteristics.
Green symbols indicate external characteristics.

COLOR

D E F G H I J Faint Very Light Light

CLARITY

IF	VS ¹⁻²	VS ¹⁻²	SI ¹⁻²	I ¹⁻³
Internally Flawless	Very Very Slightly Included	Very Slightly Included	Slightly Included	Included

LABORATORY GROWN DIAMOND REPORT



September 15, 2025

IGI Report Number **LG733590478**

Description	LABORATORY GROWN DIAMOND
-------------	--------------------------

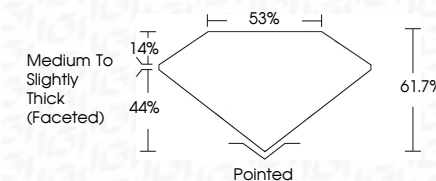
Shape and Cutting Style **TRIANGULAR BRILLIANT**

Measurements 10.84 X 10.59 X 6.53 MM

GRADING RESULTS

Carat Weight **4.05 CARATS**

Color Grade E

Clarity Grade **VVS 2**

ADDITIONAL GRADING INFORMATION

Polish **EXCELLENT**Symmetry **EXCELLENT**Fluorescence **NONE**Inscription(s) LG733590478

Comments: This Laboratory Grown Diamond was created by Chemical Vapor Deposition (CVD) growth process.
Type IIa



© IGI 2020, International Gemological Institute

FD - 10 20

www.igi.org

THIS DOCUMENT WAS PRODUCED WITH THE FOLLOWING SECURITY MEASURES: SPECIAL DOCUMENT PAPER, INK SCREENS, WATERMARK, BACKGROUND DESIGNS, HOLOGRAM AND OTHER SECURITY FEATURES NOT LISTED AND DO EXCEED DOCUMENT SECURITY INDUSTRY GUIDELINE

September 15, 2025
 IGI Report No LG733590478
 TRIANGLE AR BRILLIANT

10.64 X 10.69 X 6.53 MM	4.06 CARATS	
Carat Weight	VVS 2	
Color Grade	61.7%	
Clarity Grade	58%	
Depth	Medium To Slightly Thick (Faceted)	
Table	Pointed	
Girdle	EXCELLENT	
Culet	EXCELLENT	
Polish	NONE	
Symmetry		
Fluorescence		

Comments:
This Laboratory Grown Diamond was created by Chemical Vapor Deposition (CVD) growth process.